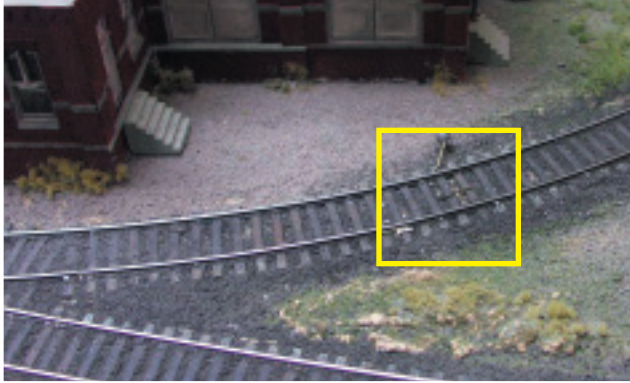


Add a Hill Brake To Hold Your Cars

By Paul Voelker



Many years ago, before he became an MMR, Ned Spiller designed and built several of these "Hill Brakes" for use on John Travis' layout. John needed something to keep cars on a hill while switching between switching moves in two locations. Ned came up with this ingenious and simple little device consisting of a split fishing weight, a piece of brass wire and two "eyebolts" made out of flat wire. Because of the way it is designed, when the brake is in the raised position, a car rolling downhill will be stopped against the upright wire when the axle of the lead wheel of a truck comes up against the brake (yellow/dotted arrow below). However, when a car or locomotive is running uphill (green/dashed arrow below) the brake will fall down to the lowered position once struck allowing unimpeded passage.

