



The Potomac Flyer

Winter Quarter

November 1996 to January 1997

The Quarterly Newsletter of Division 2 ("Potomac"), Mid-Eastern Region, National Model Railroad Association, Inc.

ROCKVILLE LIONS TO HOST 6TH ANNUAL TRAIN SHOW

INSIDE:

Events

November

Lions Club Train Show.....1

December

Happy Holidays to All!

January

Home Layout Tour....4

News

N Scale East

Convention.....2

MER Fall

Convention.....2

Structure Contest

Diagram.....8

AP Contest Judging

Forms.....9, 10

New Potomac Division

Members....back cover

Departments

Staff Roster.....3

Calendar.....3

Business Car.....5

Head End.....5

Call Board.....6

Bulletin Board.....6

Achievement Notes...7

Potomac HO Module

Crew News.....7

Pull-out Business Card

Directory.....11, 12

Potomac Division

Membership

Application.....13

In their annual support and celebration of National Model Railroading Month, the Rockville Lions Club will host their 6th annual Train Show on Saturday and Sunday, November 9 & 10, at the Rockville Senior Center, 1150 Carnation Drive in Rockville (see map on right). Hours are 10 am - 4 pm on Saturday, and 12 noon - 4 pm on Sunday.

First and foremost is a reduction in the admission charge! New rates are: \$4.00 for adults; \$3.00 for children 13 and under; children under 2 are admitted free; and the family maximum is \$6.00. Parking is free at the Senior Center.

Secondly, it'll be modules galore on display, running the gamut from Z to G. Our own Potomac Division HO Module Crew will be there, as will the NVNTrak group. Dave Cooper will display his trolley modules, and Jack Elder will be displaying his HO circus modules, which were a hit at the recent N Scale East convention/show in Alexandria (see page 2). The Washington/Virginia/Maryland Garden Railway Society will show a layout in the Center, if the weather holds, they hope to do an outside display as well.

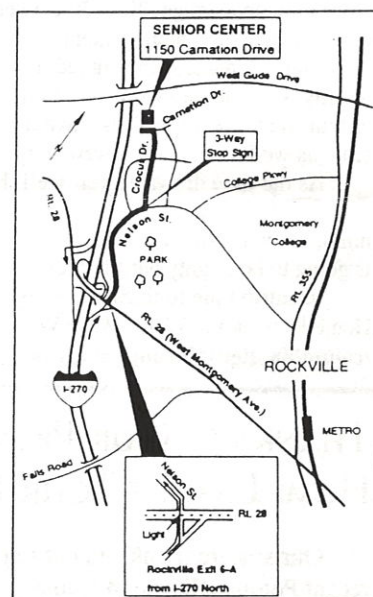
Several videotapes and slide shows will be presented, most notably a slide presentation on John Allen's famous Gorre and Daphetid Railway. A Woodland Scenics videotape clinic will also be presented, allowing you the chance to see their entire line of scenery products.

As always, the "Loco Doctor" will be keeping office hours during this show, so be sure to bring him your tired, your poor, your muddled locomotives yearning to run free. He's just the man to take

care of them for you!

The proceeds from this show benefit the Lions Club's sight conservation programs — the Lions Low Vision Center and the Lions Eye Bank.

While this is *not* a dealer show, we're happy to report that there happens to be one just up the road on Sunday, November 10 — the Gaithersburg Model Railroad Society's Show & Sale from 9 am - 3 pm. at the Montgomery County Fairgrounds in Gaithersburg. Why not shop for trains in the morning, and come watch them run in the afternoon? We look forward to seeing you, hopefully, at both events!



HERE IT COMES AGAIN — THE POTOMAC DIVISION'S MINI-CONVENTION!

It's the Potomac Division's own form of March Madness — the annual Mini-Convention, to be held this year (weather permitting) at the Fairfax County Fire and Rescue Academy on Saturday, March 1, from 9 am - 3 pm. (See map at right.)

Details of the convention have not yet been finalized, but anticipated events include module layouts, clinics, the Division's modeling contest (see page 7 for more details), and a raffle for door prizes.

Many of you remember that our convention has been "snowed out" in years past, but we hope to be past all that treacherous weather to allow our membership to come out and participate in what looks to be an interesting, informative, and educational day for model railroaders in this area.

All the final details will be available on the Mini-Convention in next quarter's *Flyer*. Watch for them, and we hope to see you there!

N SCALE EAST DISPLAYS RECORD-BREAKING LAYOUT IN ALEXANDRIA

ALEXANDRIA, VA — Imagine 291 N-scale modules all attached, with an actual running length of 1261 feet, or 38 scale miles — a new world record. Now imagine this whole layout assembled in a garage. “Where’s a garage big enough to do that,” you might ask, “RFK Stadium?”

Well, it was in the Radisson Plaza Hotel in Alexandria that was host to this year’s N Scale East convention, “RunniN TrainS ‘96” for four days in August. A floor of their parking garage was the only contiguous space available for such a monumental layout, and for this event the garage was carpeted, painted, relit, and air conditioned. And a good thing about the air conditioning, too — in addition to the almost 650 conventioners, the Train Show and Sale on Saturday and Sunday was attended by more than 12,000 railfans, onlookers, and media.

In addition to the Show and Sale, which took up several rooms throughout the hotel, the convention also provided clinics and layout tours, covering a broad spectrum of topics of interest to model railroaders — everything from layouts to scenery, history to freelance modeling, kitbashing to electronics. A total of 31 clinicians delivered 55 clinics over the four days, some running into the late hours of the evening just to be able to fit them all in! Attendance at these clinics ran an average 20 to 30 conventioners, numbers that exceeded convention management’s expectations.

Conventioners who signed up for and attended layout tours usually were blessed with visiting not just one layout, but often three or four in an evening. These layouts crossed over into HO and O scale as well as N, and all were very well received.

As the time draws nearer, we’ll bring you more information on where and when the next national convention will be held. Keep in mind, though, that a layout as big as the Alexandria convention had is going to be mighty hard to top!

(Contribution to this convention review came from NVNTrak’s Home Page on the World Wide Web, which can be found at: <http://columbia.digiweb.com/~nvnttrak/>)

THANKS TO OUR PREVIOUS HOME LAYOUT TOUR HOSTS!

Our sincere thanks go out to the hosts of the two most recent Potomac Division Home Layout Tours — J. D. Smith and Ken Nesper.

J. D.’s “Rathole Division” of the Southern Railway has seen great expansion since our past visits, with the additions of mountains, a new yard, and a sound system! As always, it’s a tight fit, but well worth squeezing in to see.

Ken Nesper’s “Potomac and Patuxent Railroad” layout tour, which actually is still two weeks hence as we go to press, shows some terrific rail and industrial modeling of railroads in the Washington area in the 1940s - 1950s, including interchanges with the B&O and Pennsy.

We hope the membership will continue to support our Division’s Home Layout Tours and their hosts; by attending these tours, it’s a sure-fire guarantee that we’ll be able to keep providing them to you.

MER FALL MEETING HAS GREAT ATTENDANCE, FULL SCHEDULE

MT. LAUREL, NJ — This year’s Mid-Eastern Region Fall Meeting covered a lot of ground in four short days. The convention was attended by 410 members from all reaches of the Region, and there was something for everybody who attended — clinics, auctions, roundtable discussions, fantrips, facilities tours, layout tours, layout operations, some non-rail activities, and a two-day train show.

Clinics, as usual, covered everything a modeler could want to know about wide-ranging topics. Prototype (both active and fallen flags), modeling, operation, digital electronics, photography, free-lance model railroads, and several Special Interest Groups (SIGs).

The Layout Lottery garnered a lot of attention and interest. Convention attendees were able, for a nominal charge, to put their names in the running to allow them to participate in an actual operating session at a local layout. Six completed layouts were opened to the chosen operators and, after an hour-long clinic/briefing on these layouts, they were taken to their selected layout for several hours of pure operation. These sessions earned points toward an AP Dispatcher certificate, and all six layouts were fully manned with chosen conventioners.

The convention’s Train Show was open to the public — convention attendees were allowed into the show an hour earlier — and was well attended; there were 70 dealer tables, and attendance was 400 civilians, plus conventioners.

Layouts were numerous — more than 28 of them were open to attendees at different times during the weekend.

At the Awards Breakfast on Sunday morning, the organizers of next year’s MER Fall Convention presented a short audio/visual program on what they have planned for their gathering. It’s not too early to mark your calendar — November 7, 8, & 9 are the dates for *Brandywine Junction ‘97* in Glen Mills, PA, and will be interacting with the DARN (Delaware Area Railroaders in “N”) convention being held the same weekend. Watch for complete details, including a registration form, here in a future issue of the *Potomac Flyer*.

FAIRFAX STATION HOSTS TRAIN DISPLAY/OPEN HOUSE IN DECEMBER

To get your model railroading holiday season off to a great start, Fairfax Station will host its 7th Annual Train Display on December 7 - 8.

Included in this year’s display will be seven layouts, from Z to O Scale (and a possibility of a No. 1-Gauge display). Our own Potomac Division HO Module Crew will be in full force, as will the Trackers, a module group dedicated to tin-plate. The “Loco Doctor” will hang out his shingle again, fresh from the Lions Club Show; if you miss him in November, you’ll have another chance for an office visit!

During the show, the station and its caboose will be open, and light refreshments (coffee, cookies, doughnuts) will be served for a nominal charge.

Hours are 10 am - 5 pm Saturday, and 12 noon - 4 pm Sunday. Admission is \$2.00 per person, or \$5.00 per family. The station is located at 11200 Fairfax Station Road, just off Rte. 123 in Fairfax Station.

The Potomac Division

Division 2 ("Potomac"), Mid-Eastern Region,
National Model Railroad Association, Inc.

The Potomac Division territory includes: the District of Columbia; Montgomery, Prince George's, Charles, St. Mary's, and Calvert Counties in Maryland; Prince William, Arlington, Fairfax, Fauquier, Loudoun, and Rappahannock Counties in Virginia, as well as the independent cities of the area.

●●● Division Staff Roster ●●●

Superintendent	Bob Minnis (703) 391-0675 (home)
Asst. Supt., MD & DC	Ell Geib (301) 948-8316 (home)
Asst. Supt., VA	Ken Jones (301) 216-5210 (home)
Paymaster	Clint Smoke (703) 425-5077 (home)
Clerk	Pete Matthews (703) 360-2313 (home)
Achievement Pgm. Rep.	Ken Berthoud (703) 354-1438
HO Module Crew	Bruce Strickland (703) 361-5620 (home)
No. Va. NTRAK	Matt Schaefer (703) 978-2946 (home)

THE POTOMAC FLYER

is the quarterly newsletter of the Potomac Division

Editor

Laura Hughes
13416 Springhaven Drive
Fairfax, VA 22033-1228
(703) 742-0177 (home)
(703) 742-6073 (fax)
E-mail: LSHughes@aol.com, or
HughesL@abc.com

Advertising in the *Potomac Flyer* is available. Per-issue rates are: \$5 for a Business Card (one-eighth page) block; one-fourth page, \$10; one-half page, \$20; full page, \$40. The back page space above the mailer goes for \$25 and is reserved on a first come, first served basis. Special rates are available for multi-issue purchases. Make checks payable to "Potomac Division," and specify size and number of runs.

Please note new deadline dates!! Submission deadlines for all materials in each issue of the *Potomac Flyer* are: Spring issue, January 15; Summer issue, April 1; Fall issue, July 1; Winter issue, October 1. Mail all submissions to: Laura Hughes • Editor, *Potomac Flyer* • 13416 Springhaven Drive • Fairfax, VA 22033-1228. Unless special arrangements are made, no materials will be returned.

Change of Address: Complete the enclosed Application/Change of Address form and send it to: Clerk, Potomac Division • P. O. Box 3204 • Manassas, VA 20108.

POTOMAC DIVISION CALENDAR

NOVEMBER

2-3, 9-10 - Richmond Freelance & Prototype Railroaders Train Show/Swap Meet

Virginia Museum of Science, Richmond

3 - Gaithersburg Railroad/Transportation Artifacts Show
Montgomery Cty. Fairgrounds, Gaithersburg
10am - 5pm/call (703) 536-2954 for info

9-10 - Lions Club Train Show
Rockville, Maryland (see page 1)

9 - Winchester Model RR Club Show/Sale
Clarke County Fairgrounds, Winchester
10am-2pm/call (540) 665-9898 for info

10 - Gaithersburg Model RR Society Train Show/
Dealer Sale

Montgomery Cty. Fairgrounds, Gaithersburg
9am - 3pm/call (301) 948-8064 for info

16 - NVMR Open House
Vienna, Virginia (see information below)

DECEMBER

7-8 - Fairfax Station Model Train Display, Fairfax Station, VA
10 am - 5 pm Sat, 12 am - 4 pm Sun/call (703) 830-5597 for info

7-8 - Greenberg's Great Train, Dollhouse & Toy Show
Maryland State Fairgrounds, Timonium
11am-5pm Sat, 11am-4pm Sun/call (410) 795-7447 for info

14 - NVMR Open House
Vienna, Virginia (see information below)

JANUARY 1997

4-5 - Greenberg's Great Train, Dollhouse & Toy Show
Capital Expo Center, Chantilly, Virginia
11am-5pm Sat, 11am-4pm Sun/call (410) 795-7447 for info

25-26 - Ellicott City Scale Model RR Assn.'s Great Scale
Train Show

Maryland State Fairgrounds, Timonium
9am-4pm Sat, 10am-4pm Sun/call (410) 730-1036 for info

Local model railroad clubs may have their events listed here if space permits. Please send a schedule of your activities to Laura Hughes, Editor, *Potomac Flyer*, at the address shown at left.

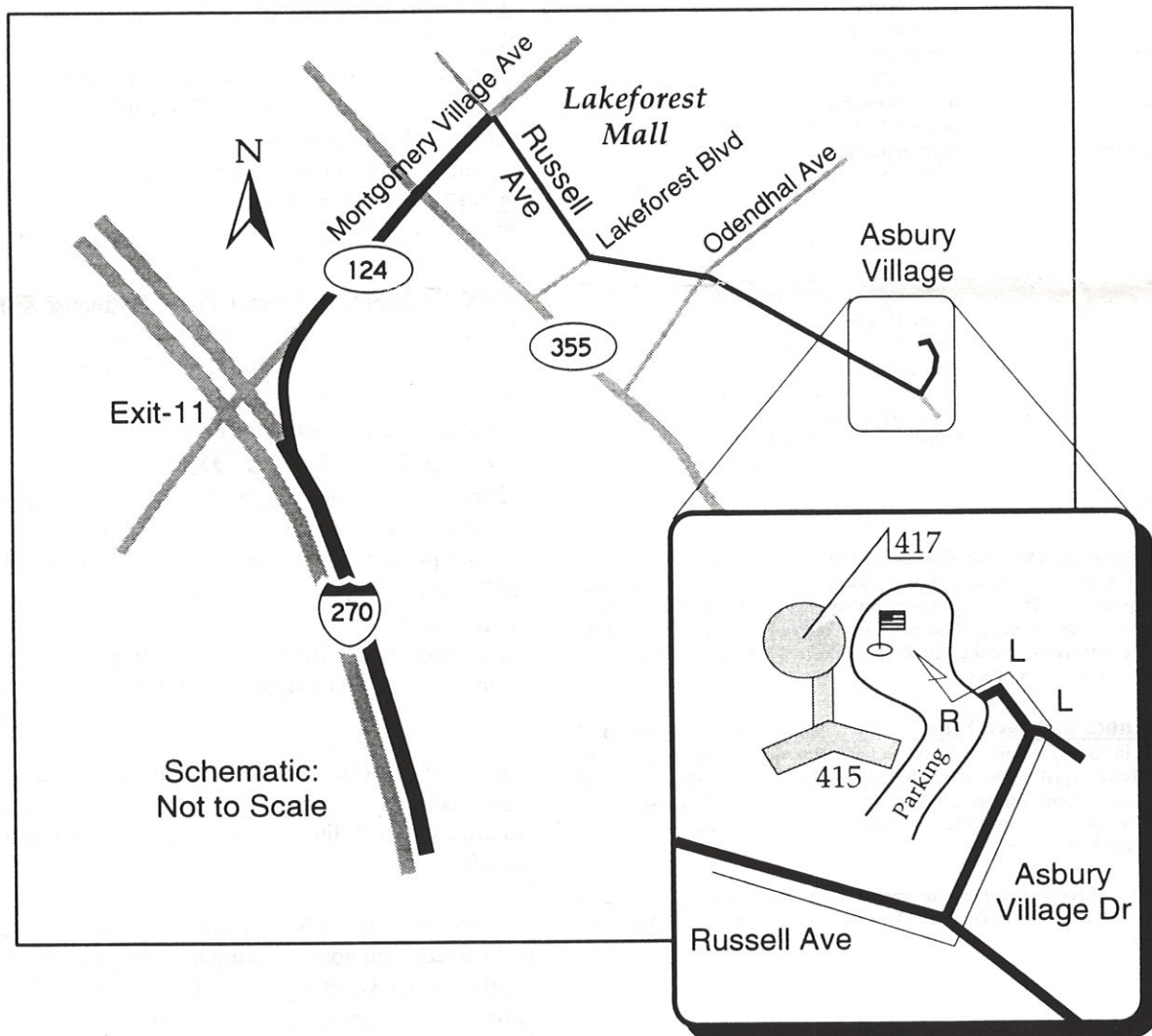
Northern Virginia Model Railroaders, Inc., has regularly scheduled open houses throughout the year. NVMR is located in the former Washington and Old Dominion Railroad Station, 231 Dominion Road (at Ayr Hill Road), Vienna, VA 22180. The club meets Tuesday evenings. For more information about the club's Open Houses or about how to become a member, call (703) 938-5157.

POTOMAC DIVISION'S JANUARY HOME LAYOUT TOUR
KEN JONES' HO SCALE ASBURY MODEL RAILROAD
415 RUSSELL AVE. • GAITHERSBURG, MD • (301) 216-5210
SUNDAY, JANUARY 19, 1997, 1 TO 5 P.M.

The Asbury Model Railroad is a contemporary regional mix, with motive power drawn from the roads that dissolved into Conrail and CSX. The 12' x 22' layout is fully scenicked with many interesting scenes and vignettes, including an operating ice rink, a miniature golf course, a beach and swimming pool, along with an intermodal facility and a steam-era museum. Featured on WRC-TV last fall, the layout has hosted a whopping **15,000** visitors in the last four years..

Directions:

Take I-270 to Exit 11, Montgomery Village Avenue. You *must* be in the collector-distributor lanes in order to take this exit, so plan ahead. Head east on Montgomery Village Avenue to Russell Avenue, the first light after Frederick Road (SR 355). Turn right on Russell Avenue. Follow along for about half a mile, passing Lake Forest Blvd. and Odendhal Avenue. Turn left into Asbury Village. Turn left again, and turn right as you enter the parking lot. Park where convenient in the flagpole lot facing Building 417. Enter via Building 417. There will be signs leading you to the trains.



Head End

—Laura Hughes
Potomac Flyer Editor

I'm surrounded by trains.

No, I'm not complaining. But it occurred to me the other day, as I was sitting around thinking of something clever and witty to write about in this column, that there isn't a day that goes by without trains in it.

My daily rail interaction is my commute to work: a half-hour ride each way on the Washington Metro's Orange Line from Vienna (Va.) to downtown Washington, DC. As interstate driving gets more crowded, and drivers seem to get more and more dangerous, the 30 minutes that I can spend reading, or working the morning crossword, or computing, or even napping, are almost like stolen moments to me. (Of course, I've *seen* people on interstates doing most of those same things while they're driving, so to some it may not seem that much different.)

At work, I have access to a computer that allows me to read all of the stories on the Associated Press and Reuters news wires, and every day I search for stories under the headings of "rail" or "train." It keeps me up to date on everything from derailments to mergers, from Amtrak financing to features on scenic railways and model railroads, from Operation Lifesaver to abandoned trackage.

Home, as you might imagine, is more model-oriented than prototype-oriented.

"George's basement," as our friends call it, is truly Train Central. In addition to a shop that he and some friends renovated this past Spring, his layout takes up all the rest of the space in the basement. And, boy, is it Trains Galore: HO models in all flavors, some truly esoteric, some sentimental favorites, some purely operational; a reference library of books and photos that surely must touch on at least a facet of everything about this hobby; and there's no wall space left. I mean, *none*. The walls are taken up entirely with prints and plates and photos and awards and more models on display and...well, you get the idea.

Weekends, of course, find us usually having friends over to do train-related stuff, or else we're on the road to one hobby shop or another, or we're both down in the basement: me on the computer, George at the workbench. Likewise with vacations — if there's trains to be had, no matter what city we're in, there's where you'll find us.

And I wouldn't — *couldn't* — have it any other way.

Now, lest you think that this is the *only* recreation we seem to participate in, that's absolutely not true. Sometimes we eat and sleep.

As Bob Minnis is about to mention over in the next column, November is National Model Railroad Month. (Sorry to steal your thunder, Bob.) Why not use that as a way to get family members interested in your hobby, if they aren't already? Think about taking the kids out to a local museum, or to a layout on display, or even down to Union Station — did you ever know a child who *wasn't* fascinated by locomotives? Teach them how to spell "Amtrak." (If they're a little younger, start by teaching them how to spell "NS" or "CSX" instead. Let your youngsters know what that "BAR" or "PC" or "MKT" stands for on the sides of freight cars. Encourage them to participate in model railroading — they'll be learning history and geography, too, and they won't even know it!

This hobby doesn't have to be a secret. Spread it around this month.

Business Car

—Bob Minnis
Division Superintendent

The announcement of the new MER officers in President Quale's column of the July/August *LOCAL* contained an error. The correct list of MER officers is:

Bill Gruber — President
John Johnson — Vice President (re-elected)
John Long — Secretary (re-elected)
Ron Schmidt — Treasurer

Congratulations to the new officers. A much larger response appears to have been generated by including the candidates' biographies with the ballot. Look for a repeat process in future elections. Nominations for the three Director positions are still being solicited and accepted. (This is an excellent way to serve the hobby — it also counts for AP points.) If you are not up to running for a Director position, Alex Pope needs help on this Committee. At present, several committee chair positions are vacant (Photo and Non-Rail Contests). President Bill Gruber will be looking for volunteer candidates to appoint to these and other vacancies. Help the MER promote model railroading: VOLUNTEER!

I want to extend a big CONGRATULATIONS to the volunteers who ran the recent NTrak East convention. It was one of the best organized and smoothly-run conventions that I have attended. Public attendance at the Train Show was almost overwhelming. Thousands waited their turn patiently to observe the displays and to watch trains run. Read more details in Matt Schaefer's report on page 2.

Our Fall Swap Meet was a qualified success. There were plenty of tables filled with all types of "goodies," some at bargain prices. Attendance was below expectations due to the fabulous Fall weather.

The Board has started to plan for the annual meeting (mini-convention). It will be held on March 15-16, 1997, at the Fairfax Fire Academy on West Ox Road in Fairfax/Fair Oaks. If you have a railroad-related topic and are interested in presenting a clinic, it's not too early to volunteer! (This also counts toward AP certification.) Please contact one of the members of the Board (their phone numbers are on Page 3). Volunteers will be needed to assist at the Registration Desk and at the Raffle Table. A White Elephant Table is a possibility if there is sufficient interest. Lunch will be available at a reasonable cost.

November is National Model Railroad Month. This is the time designated to emphasize and promote the hobby. There are many facets to this hobby: photography; prototype or freelance modeling; operation; scratchbuilding; kit-bashing; steam, transitional or diesel era; plus the many scales and gauges, just to name a few. Most modelers only embrace a limited number of these disciplines. Regardless of your specific interests, plan to share your knowledge and hobby with others. You can sponsor an open house; attend a train show; conduct a clinic at or build a display for the local library; donate a subscription of your favorite hobby magazine to a library or community youth center. Do what you can to help promote the hobby. Just like an army, the NMRA needs new recruits to sustain its growth and to meet its goals of promoting the hobby of model railroading.

Call Board

Potomac Division members sharing their
interests with fellow members
Hosted by Carl Barna

RICK WRIGHT

Rick Wright, 45, has been an active modeler since 1964, though he received his first Lionel train set (which he still has!) back in 1952. After 16 moves in a 23-year career in the U.S. Navy, he has gotten plenty of layout building experience, and still has some of the HO modules he built back in 1973 while an ensign stationed on a ship in Long Beach, California.

He and his wife Melly, and daughters Jennifer (10) and Carolyn (7), have recently moved back into their home in Burke following sea and staff duty in Tidewater, Virginia. He has received a "highball" to build an O gauge layout occupying virtually the entire basement in a 2-foot-wide around-the-wall design with a 4 ft.-by-14 ft. "well" for an operating yard/water terminal. Included in this home layout will be five "Sierra Crossing" modules (based on SP's California prototype) which he exhibited in the huge Tidewater O Gauge Modular Group 24 x 75-ft. layout in Pembroke Mall, Virginia Beach, for 7 months.

Though continuing to enjoy the collecting aspects of pre- and post-war Lionel, the emergence of Mike's Train House, Crown Model Products, and an enhanced Weaver line of motive power and rolling stock (replete with accurate sound effects!) have resulted in an increasingly "operational" focus to his O gauge/scale efforts. Assuming he can get a handle on bending and cutting GarGraves track, the current timetable calls for the layout to be completed, except for super-detailing and an operational signal system, just before the holidays.

GRANDDAD'S HOBBY SHOP

Contributed by Clint Smoke

Did you know there is a new hobby shop in Springfield? It is located on Port Royal Road just off Braddock Road in the Ravensworth Shopping Center. Where is that, you ask? Granddad's Hobby Shop is located at 5260-A Port Royal Road. If you know where Kilroy's restaurant is located, you are in the right neighborhood. And if you or your wife know where Frugal Fannie's Fashion Warehouse is located, that is right across the street from the hobby shop.

"Granddad" is Robert B. Thatcher. He is a friendly and knowledgeable gentleman. It follows that he has been a model railroader for quite a while and, like many of us, he likes hobby shops. He started this business after carefully planning such a venture for over a year. When the building on Port Royal Road became available, he seized the opportunity to fulfill a dream. He stocks the usual train items, of course, including a lot of parts and scenic supplies for scales from G to N as well as boat, plane, and other hobby needs. A unique feature of the store is its library, with years of *Model Railroader* magazine and other trade publications available for your reference use.

Parking is available at the front door. In fact, you might make a deal with your bride: next weekend, offer to drive her to Frugal Fannie's, where parking is always a challenge. While she is there, you can park and shop at Granddad's. The store is open seven days a week.

(Editor's note: If there's a new hobby shop in your neighborhood, be sure to let us know about it. An article like this one serves all of us, retailer and customer alike. See Page 3 for how to get in touch with us to tell us about new model shops or activities in your area.)

Bulletin Board

Things for sale, Help Wanted, etc.

Must Sell or Swap — Modeler is modeling the early Sunnyside in the early 1960s and has a surplus of heavyweight cars. If you wish to buy heavyweight Rivarossi cars (with Jaybee wheels already installed) in their original boxes, or if you wish to swap lightweight cars for heavyweights, call Nick Kalis at 703-931-1772.

Got Something to Sell/Trade? — Need some fast cash for that new model, or book, or operating system you just can't live without? Here's where to let the membership know what you have to sell or trade — and, best of all, the ad is **FREE** to Potomac *Flyer* subscribers! Just send a brief description of your item(s), along with your name, address, and phone number to: **Bulletin Board**, c/o Laura Hughes, 13416 Springhaven Drive, Fairfax, VA 22033-1228. Or phone in your ad copy to 703-742-0177. Let's get that stuff movin'!

Achievement Notes

—Ken Berthoud
NMRA Achievement Program Representative

It's that time of year to start planning for the upcoming March Mini-Convention. As the emphasis will be on modeling and model building, now is the time to begin building your models. We will again have a Popular Vote Contest as well as Achievement Program (AP) Merit Judging. Last year, many attendees entered only the Popular Vote Contest; however, by completing two forms, those of you who are NMRA members can also enter the Merit Judging portion. A Model Contest Entry Blank and Judge's Scoring Sheet are included in this issue (on pages 9 and 10) for you to reproduce and submit along with your models. To obtain the new rules, regulations, and specific forms for each of the AP categories, please contact me. My phone number is on page 3 of this *Flyer*.

AP Judging at the Mini-Convention

NMRA AP Merit Judging will be available in several separate categories: Steam Locomotives, Diesel and Other Locomotives, Freight Cars, Passenger Cars, Cabooses, Non-Revenue Cars, Structures, Dioramas and Displays, Modules, and Traction.

All items presented for Merit Judging will be judged by NMRA rules. Each entry item (including modules) must be accompanied by the NMRA Model Contest Entry Form and a Judge's Scoring Sheet.

Please note that descriptions written on these forms can make or break merit qualification. Sometimes explaining why you did something clarifies it sufficiently for the judges to give you credit, where the model alone might not earn enough credit to qualify for a merit award. Take time to complete the forms -- add additional sheets if necessary to complete your explanation.

Beginners' Contests

We plan to have two special contests for beginners again this year: a **Rolling Stock** contest and a **Structure** contest. Any member who has never won or placed in an NMRA-sponsored contest, whether at National, Regional, or Division level, is considered eligible. The models will be judged for merit awards, with the winner being the model having the highest point score. Each model must be accompanied by a completed NMRA Entry Form and Judge's Scoring Sheet. Winning models will receive special awards whether or not they actually qualify for a merit award.

Rolling Stock Contest: You may choose and build any kit you wish in any scale. The model will consist of the kit parts plus any detail parts you choose to add to make it more prototypical. The model should be custom painted, decaled if required, and weathered appropriately.

Structures Contest: This contest is designed to be more objective. We have chosen the structure, an SP Yard Office; the diagram of it can be found on Page 8 of this *Flyer*. The model may be built in any scale and out of any materials you choose. Again, the models will be judged on AP criteria with the winner receiving a special beginner's award.

Popular Vote Contest and Superintendent's Plaque

The Popular Vote Contest is a competition in which all attendees at the convention can vote for their favorite model in each category, with the winners being those models receiving the most votes. Winners will receive special certificates as well as the accolades of their peers. Models entered in this contest will not be submitted for merit judging. While they are conducted concurrently, the contest and merit judging are otherwise independent activities.

(Achievement Notes continued next column)

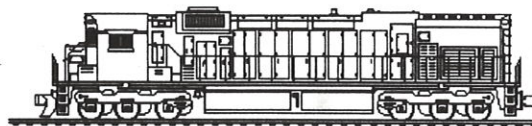
(Achievement Notes continued from left)

Finally, anyone entering a model or module in the contests will receive a discounted admission price to the Mini-Convention.

Superintendent Bob Minnis will select a model/module as Best Of Show. The winner will receive the Superintendent's Plaque and a certificate to commemorate the award.

We will need judges for these contests; if you are willing to judge, please get in touch with me. (Remember, time spent judging counts toward your Association Volunteer Certificate.)

That about wraps it up. Again, if you have any questions, do not hesitate to call me. I will be happy to help you with details about the model contests, merit judging, or getting started in the Achievement Program.



HO Module Crew Notes

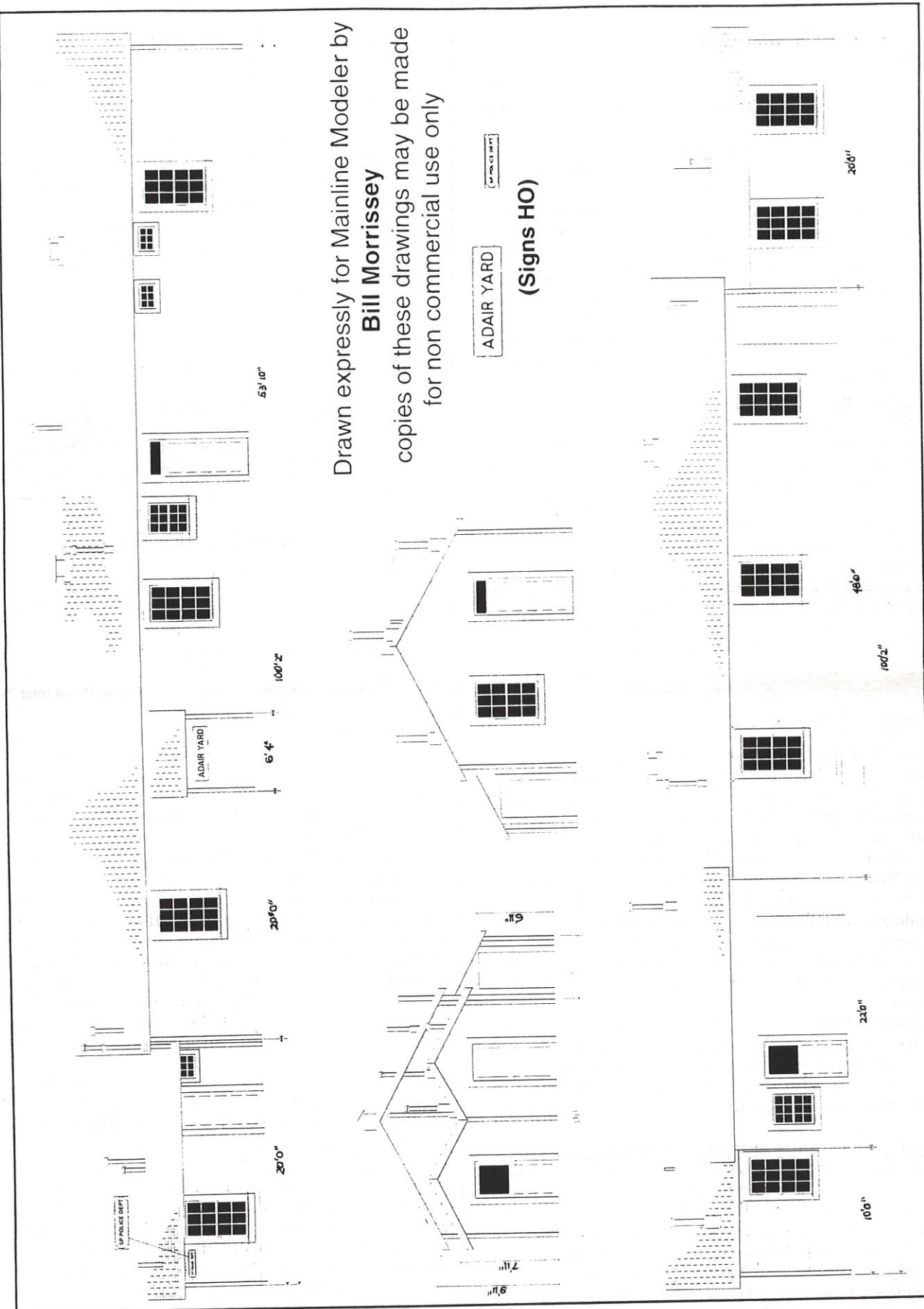
—Bruce Strickland
HO Module Crew

The Module Crew had a relaxed summer this year. We only appeared at one event, but it was spectacular -- the NTrak Convention Train Show on August 17 and 18. We presented a total of thirty-nine modules (not counting our staging yard) to assemble a layout that was 32 by 48 feet. It was an S-shaped layout that included the debut of a set of four circus modules by Jack Elder, as well as a set of adapters to convert an outside corner to an inside one (that was built by Ken Heinen). The circus modules were a big hit with the crowd, thanks to Jack's explanations of all the scenes in the modules. The layout also featured a traction line, as well as plenty of regular trains. Although this was our largest railroad so far, it paled in comparison to the NTrak extravaganza.

I would like to thank John and Joel Dallain, Ralph Douglas, George Dykes, and Tom Hefner for their module contributions and assistance in operations (a thanks, too, to Chuck Young, who supplied one of the modules but was unable to attend). Potomac Crew members who brought models and ran trains were Dave Cooper, Tim Costello, Jack Elder, Eli Geib, Ken Heinen, Jim Matthews, Bob Minnis, Paul Morehead, Bruce Strickland, Dave Traudt, and Colin Weiner. Assisting with operations were Eric Heinen and Lindsay Strickland.

Our future schedule includes the Rockville Lions Club Show (Nov. 9 - 10), an appearance at the Fairfax Station fundraiser (December 7 - 8), and the National Capital Children's Museum (December 28 - 29). There may be other events added -- stay tuned.

I recently asked our Division Clerk for a list of people who had expressed an interest in HO modular railroading (as indicated on their membership applications). Pete sent me a list of 156 names, and I'll soon be getting in touch. I would like to encourage all of you to check us out at any of the events where we appear, and to issue an invitation to join us and build a module -- or two! Please feel free to contact me at any time in the evening; my phone number is on page 3 of this *Flyer*.



Drawn expressly for Mainline Modeler by
Bill Morrissey
copies of these drawings may be made
for non commercial use only

ADAIR YARD

(Signs HO)

NMRA Model Contest Entry Blank

Instructions:

1. This *Entry Blank* (Form 901) and the *Judges' Score Sheet* (Form 902) must be filled out completely.
2. Fully describe your entry in the space provided.
3. Past National first place and Gold Award winning models are not eligible.
4. Supplemental information, including plans and photos, may accompany your entry. However, the judges are under no obligation to consult this information. (The contest chairman may limit this material.).
5. Retain your claim check. It must be presented to the contest committee to pick up your model.
6. Models may not be removed from the contest room without permission of the contest committee.
7. The contest committee reserves the right to display entries as they see fit.
8. Be sure to place a value on your entry, for insurance purposes.
9. After filling out this *Entry Blank* and the *Judges' Score Sheet*, return both to the clerk and receive the entry number for your *Entry Blank*, *Judges' Score Sheet*, *claim check* and *model identification tag*. Place the identification tag on your model. Place your entry on the proper category table with your *Judges' Score Sheet* beneath your entry. (The contest chairman may instruct you differently.)

Category Entered (check only one)

- ☐ Steam
- ☐ Diesel and Other Locomotives
- ☐ Passenger Cars
- ☐ Freight Cars
- ☐ Cabooses
- ☐ Non-revenue Cars
- ☐ Structures—On Line
- ☐ Structures—Off Line
- ☐ Display—On Line
- ☐ Display—Off Line
- ☐ Traction
- ☐ Module

Total number of
points scored in
NMRA judging

Entry Number _____

Scale: ☐ O ☐ S ☐ HO ☐ N ☐ Z ☐ Other _____

Description of Entry _____

Verified by _____ Value of Entry (for insurance purposes) \$ _____

10. I certify that this model is entirely my own workmanship and I hereby release the NMRA from any liability due to damage or loss of my entry beyond that provided by the NMRA insurance coverage.

Please print or type- make sure it is legible.

Name _____ Age _____ NMRA Number _____ Region _____

Address _____ City _____ State _____

Signature _____

Model Qualifies for Achievement Program ☐ Yes ☐ No Score

Signed _____

NMRA Model Contest Claim Check

Must be presented to pick up your entry.

Entry No. _____

I hereby certify that the model entered by me in the model contest has been returned to me in satisfactory condition.

NMRA Model Contest Form No. 901

Signature _____

NMRA Model Contest Judges' Score Sheet

Model Description _____ Entry No. _____

Describe Your Model in Detail. Check the Items that Apply. Add Other Data.

1. CONSTRUCTION (Maximum 40 Points)

- | | | | |
|------------------------------------------------|----------------------------------------------------------|--------------------------------------------------|----------------------------------------|
| <input type="checkbox"/> Drew my own plans | <input type="checkbox"/> Followed a construction article | | |
| <input type="checkbox"/> Used prototype plans | <input type="checkbox"/> Cut and fit metal | <input type="checkbox"/> Cut and fit cardstock | <input type="checkbox"/> Soldered |
| <input type="checkbox"/> Used kit plans | <input type="checkbox"/> Cut and fit plastic | <input type="checkbox"/> Cut and fit glass | <input type="checkbox"/> Made patterns |
| <input type="checkbox"/> Used commercial plans | <input type="checkbox"/> Cut and fit wood | <input type="checkbox"/> Crosskitted (kitbashed) | <input type="checkbox"/> Made molds |

Points Awarded

Describe in detail how model was built: _____

2. DETAIL (Maximum 25 points)

Points Awarded

Describe complexity, difficulty, refinement, amount of subordinate parts. _____

List commercial parts used. _____

3. CONFORMITY (Maximum 10 Points)

Points Awarded

Give information as to prototype modeled, or explain logic of design. _____

4. FINISH and LETTERING (Maximum 25 Points)

Points Awarded

- | | | | | |
|------------------------------------------------|----------------------------------------------|----------------------------------------|---------------------------------------|---------------------------------------------|
| <input type="checkbox"/> Weathered | <input type="checkbox"/> Not weathered | <input type="checkbox"/> Sprayed | <input type="checkbox"/> Brushed | <input type="checkbox"/> Masked and sprayed |
| <input type="checkbox"/> Used decal lettering | <input type="checkbox"/> Used decal striping | <input type="checkbox"/> Hand lettered | <input type="checkbox"/> Hand striped | |
| <input type="checkbox"/> Other (explain) _____ | | | | |

5. SCRATCHBUILDING (Maximum 25 Points)

Points Awarded

List all parts you have fabricated. You will receive credit for these. Note any special or unusual features. _____

This space is for Contest Committee only

Tabulated _____ Verified _____

Final Score

Business Card Directory

Place this Directory in your phone book, on your work bench, or on your bookshelf.

Be sure to patronize our sponsors and tell them you saw their ad here in the *Potomac Flyer*.

ADVANCED QUALITY RAILROAD VIDEOS

Discount Prices & Free Shipping

(301) 231-3672

P.O. Box 588
Kensington, MD 20895-0588

HO and N Scale
Vehicles and Structures

Wholesale
and Retail

Authentic Miniatures
of the american scene

Roger R. MILAM
P.O. Box 5
Burtonsville, MD 20866-0005

301-384-6299
Sunday-Thursday
9 AM - 9 PM

DENNISONS TRACKSIDE HOBBIES

MODEL RAILROAD HEADQUARTERS
Model Rockets — Cars — Collectables

Tues.
thru
Friday
11-8

14 South Main Street
Berlin, MD 21811
(410) 641-2438

TOLL FREE 1-800-972-6898

Saturday
10-5
Sunday
12-4

(410) 647-3335

Frank's Caboose

Model Railroading Services
• Layout Design • Consultation
• Train Repairs

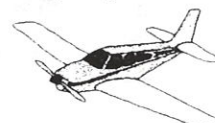
FRANK WINNER

283 Oak Ct.
Severna Park, MD
21146



Action Hobbies
2076 Daniel Stuart Square
Woodbridge, Va. 22193-3315
703-494-6658
703-494-1337 (fax)

Model Railroad Supplies
N, HO, HOOn3, O, On3, G, & Lionel
Radio Control Boats, Cars, & Planes
Rocket Kits, Engines, & Supplies
Plastic Models
Tools & Building Supplies



A full line Hobby Shop with discount prices.
Mon-Fri 10am-8pm Sat 10am-6pm

ARLINGTON HOBBY CRAFTERS

FOR THE YOUTH....FOR THE GROWNUP

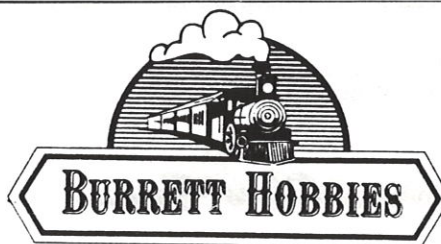
MODEL CARS, BOATS, AIRPLANES
HOBBY AND MODEL TOOLS
MODEL BUILDING SUPPLIES
MODEL RAILROAD



ROCKETS AND TANKS
PAINT BY NUMBERS
RADIO CONTROL
CARS, BOATS AIRPLANES

BILL WISEMAN
(703) 532-2224

WILLSTON CENTER
6176 ARLINGTON BLVD. (RT. 50)
FALLS CHURCH, VA 22044



Bruce B. Blackwood

9920 Rhode Island Avenue · College Park, MD 20740 · 301-982-5032
Fax 982-9660

LIONEL • K-LINE
WILLIAMS • WEAVER
HO Scale • N Scale • LGB

OLD TRAINS
BOUGHT & SOLD
LIONEL AUTHORIZED REPAIRS



ENGINE HOUSE HOBBIES
Located in Olde Towne Gaithersburg

315-G East Diamond Ave.
Gaithersburg, Md 20877

(301) 590-0816

• LIONEL AUTHORIZED VALUE ADDED DEALER
• AUTHORIZED LIONEL SERVICE STATION
• LGB AUTHORIZED RETAILER

KMA JUNCTION
MODEL TRAIN SUPPLIES & SERVICE

CAVALRY VILLAGE SHOPPING CENTER
9786 CENTER STREET
MANASSAS, VIRGINIA 22110

STEVE FORTES
(703) 257-9860

PHONE
(410) 539-6207

TOLL FREE
(888) TRAINS-5
(888-872-4675)

FAX
(410) 685-1357



M. B. Klein, Inc.
MODEL TRAIN HEADQUARTERS



TED KLEIN
President

162 N. GAY STREET
BALTIMORE, MD 21202



HARRY & NANCY SPICER
(410) 374-1005
1-800-821-6377

MAIL BAG HOBBIES

MODEL TRAINS AND ACCESSORIES
RETAIL MAIL ORDER

SHOWROOM
16817 GORSUCH MILL RD.
UPPERCO, MD 21155

Box Two Nineteen
MONKTON, MD 21111

MAINLINE HOBBY SUPPLY



SCALE MODEL RAILROAD SUPPLIES

15015 Buchanan Trail East
on Route 16 E. of Waynesboro
Blue Ridge Summit, PA 17214
(717) 794-2860

HOURS:
Mon-Wed 10-8 Th-Fri 10-9
Sat 10-5/Sun 1-5
Brian & Bonnie Wolfe



TRAINS and HOBBIES

Mayberry & Sons, Inc.

Trains & Accs. • All Scales • Art Supplies
Doll Houses • Plastic Models • Kites

Hours - Mon. 4 pm - 9 pm
T - F 12 pm - 9 pm
Sat. 10 am - 6 pm
Sun. 10 am - 5 pm

Phone: (301) 564-9360
10527 Summit Ave
Kensington, MD 20895

(703) 658-9520
FAX (703) 658-9522

Obies Trains
H.O. AND "N"
TRAINS

FRED OBERMEYER
Owner

6461 EDSALL ROAD, SUITE 405
ALEXANDRIA, VIRGINIA 22313

YOU ALWAYS HAVE A FRIEND AT "THE RIPTRACK"

"THE RIPTRACK"
Scale HO and N Exclusively

A VERY DISCRIMINATING SERVICE
FOR THE MODEL RAILROAD ENTHUSIAST



GORDON & EVELYN JOHNSON

REPAIR ALL GAUGES CUSTOM PAINTING/RESTORATION

2885 PS Business Ctr
Woodbridge, VA 22192

(703) 590-6901
Member NMRA

Hours: 12-8 Weekdays 10-9 Sat 12-6 Sunday & Holidays



George Hughes
(703) 742-6073
E-Mail: sprshops@aol.com

SPRINGHAVEN SHOPS

Manufacturer of DCC-Compatible Power Supplies
Authorized DIGITRAX Digital Command Control Dealer

13416 Springhaven Drive • Fairfax, VA 22033-1228

Authorized Lionel Service Station 474



TRAIN DEPOT SALES & SERVICE

SUDLEY CORNER CENTER
7214 NEW MARKET COURT
MANASSAS, VIRGINIA 22110

JOE KENNEDY
(703) 335-2216

National Capital Trains

Bernard Kritzer

9001 Scott St.
Springfield, VA 22153

(703) 644-0839
7-11 P.M. ET

TSG HOBBIES

Tony Tripi

MODEL RAILROADING - PLASTIC MODELS
STAMP & COIN COLLECTING

ROCKETS - DOLLHOUSES - MAGIC - GAMES

----- NMRA - APS - NSDA - ATA - NRHSA - IMS -----

251 WEST LEE HIGHWAY, 683 WARRENTON CENTER
WARRENTON, VIRGINIA 22186-2033
OLD (703) NEW (540) 347-9212 FAX: (540) 347-9212
HOURS: MON-SAT 10-6, THUR-FRI TILL 7:30PM, SUN NOON-5

POTOMAC DIVISION

Division 2, Mid-Eastern Region, National Model Railroad Association, Inc.

MEMBERSHIP APPLICATION AND INTEREST SURVEY

The Potomac Division provides various activities for all interested model railroaders, such as home layout tours, prototype tours, and a Mini-Convention every March. We publish a quarterly newsletter, the *Potomac Flyer*, detailing Division activities. We proudly boast one of the greatest concentrations of model railroading talent in the country with over 10 NMRA Master Model Railroaders in our area, as well as hundreds of other outstanding modelers.

The Potomac Division encompasses: Washington, DC; Calvert, Charles, Montgomery, Prince George's, and St. Mary's Counties in Maryland; and Arlington, Fairfax, Fauquier, Loudoun, Prince William, and Rappahannock counties in Virginia, as well as local independent cities. Local residence and MER or NMRA membership are not required for Division membership. Anyone interested in learning more about model railroading, improving their modeling skills, and enjoying the company of fellow model railroaders is invited to join the Potomac Division.

PERSONAL INFORMATION

Check here to indicate a change of address: ☐

Name:

Home Phone:

Street Address or P. O. Box:

Work Phone:

Additional Address:

*NMRA and MER use birthdate for demographic purposes as well as Life Membership applications.

NMRA Memb. No: Exp. Date:

MER Memb. No: Exp. Date:

Birthdate*:

NOTE: This information required by MER and NMRA

City: State: ZIP + 4: E-Mail address:

Occasionally we make our mailing list available to carefully selected model railroading-related companies. If you do not wish to have your name included, check here: ☐

INTEREST SURVEY

Primary Scale: Secondary Scale:

Do you have (Check all that apply):

☐ A layout or module? ☐

☐ Narrow gauge interest? ☐

☐ Module interest? ☐

☐ Traction interest? ☐

☐ Would you host a Home Layout Tour?

If so, may we visit within:

☐ 6 months ☐ 12 months ☐ 18 months

Favorite Railroad(s) & Prototype(s) Modeled:

Please list NMRA Special Interest Groups (SIGs), model railroad clubs, and railroad historical societies to which you belong:

New and renewing members: Please include a short paragraph or two (optional) describing yourself and your railroading interests for possible inclusion in upcoming *Call Board* columns. (See the current issue of the *Potomac Flyer* for examples.)

DUES CALCULATION

Please fill out this section completely, including whether you are new or renewing. Renewing NMRA and MER members, please supply your birthdate, membership numbers, and expiration dates in the Personal Information section above. **Incomplete information may delay your renewal.**

Potomac Division: Dues are \$2 per year. Members receive the quarterly *Potomac Flyer*. Membership expires on December 31 of the current year. New members joining after August 31 will be enrolled through the end of the following year.

Mid-Eastern Region: Dues are \$8 per year. Members receive the bimonthly *MER Local*. Renewing members, please supply your birthdate and both your MER and NMRA membership numbers and expiration dates in the Personal Information section above. You may also write MER directly at: The Mid-Eastern Region, Inc. • Office Manager • 13212 Bellevue St. • Silver Spring, MD 20904. **NOTE: You must be a member of the NMRA to be a member of the MER.**

National Model Railroad Association: Dues are \$30 per year. Members receive the monthly *NMRA Bulletin*. Renewing members, please supply your birthdate and NMRA membership number and expiration date in the Personal Information section above. You may also write NMRA directly at: National Model Railroad Association, Inc. • Headquarters Office • 4121 Cromwell Rd. • Chattanooga, TN 37421.

Please make your check payable to **Potomac Division**. Send check with your completed application to:

Clerk, Potomac Division • P. O. Box 3024 • Manassas, VA 20108

The Division will forward National and Regional dues. Allow 6 - 8 weeks for processing.

	New	Renewal
\$ <input type="text"/>	<input type="checkbox"/>	<input type="checkbox"/>
\$ <input type="text"/>	<input type="checkbox"/>	<input type="checkbox"/>
\$ <input type="text"/>	<input type="checkbox"/>	<input type="checkbox"/>
\$ <input type="text"/>	TOTAL	

POTOMAC DIVISION NEW/RENEWAL MEMBERS

Once again, we're pleased to offer this new feature: highlighting the new and recently renewed members of the Potomac Division. We're glad you've joined us, and hope the Division can be as rewarding to you as you are to the Division! Welcome as of September 1 of this year to:

Douglas Adams
Peter E. Blau
David Cawood
James E. Collins
Gregg Detkos
Paul Donovan
Bryan Esposito
Ronald P. Frankum
Norman Gerstenzang
David Gunnarson
Jim R. Howell
Clarence T. Huffman

Clinton Hyde
John Leachtenauer
Robert C. Miller
Ed Morthimer
John Overman
Bill Palmer
Rebert E. Persigehl
Wayne Price
Robert L. Smith, Sr.
William Tesh, Jr.
Peter & Matthew Tjaden
Rick Wright

And don't be shy or modest — drop us a note and tell us about yourself and your model railroading interests, and we'll include you in our next **Call Board!**

The Potomac Flyer

The Quarterly Newsletter of
Division 2 ("Potomac") — Mid-Eastern Region
National Model Railroad Association, Inc.

P. O. Box 3204 • Manassas, VA 20108

NON-PROFIT
U. S. POSTAGE
PAID
MANASSAS, VA
PERMIT NO. 234

Division-supplied label: the expiration notice
applies only to Division membership.