



# The Potomac Flyer

Summer Quarter

May to July 1998

The Quarterly Newsletter of Division 2 ("Potomac"), Mid-Eastern Region, National Model Railroad Association, Inc.

## THE "HEARTLAND EXPRESS '98" SET TO ROLL INTO KANSAS CITY IN JULY

### INSIDE:

#### Events

##### May

Home Layout Tour....2

##### June

Home Layout

Tours.....6, 7

##### July

Home Layout Tour..8

NMRA 1998 National  
Convention

Heartland Express '98

Kansas City, MO.....1

#### News

NMRA National

Convention.....1

#### Departments

Staff Roster.....3

Calendar of Events....3

Business Car.....4

The View from the

Keyboard.....4

Achievement Notes...5

Bulletin Board.....5

Pull-out Business Card

Directory.....9, 10

Potomac Division

Membership

Application.....11

Websites of Inter-

est.....back cover

It's as annual as the summer crop of corn and tomatoes — this year's NMRA National Convention, the "Heartland Express," is scheduled for the week of July 20 - 26, to be held at the Kansas City Marriott Downtown in Kansas City, MO.

In the planning for several years, the convention will offer a various assortment of clinics, contests, and tours — layout and prototype, industrial and non-rail. In short, as is always the case with an NMRA National, there's something for every member of the family.

Owing to their timeliness and availability, clinics have not yet been formally announced. It is expected that they will, as in years past, cover nearly every known model railroading aspect, from basics to advanced, from generic to specific, presented in most cases by the experts that we've come to recognize in the hobby.

Several prototype, industrial, and railfan tours *have* been published, and have, in many cases, already been sold out to those NMRA members who registered very early — it wasn't too soon, for example, to have registered for the '98 convention while attending the '97 conven-

tion!

It's always a good thing to register early for an event like this, and we suggest you do just that. You can call the Heartland Express registration Hotline at (913) 894-1255, or find a registration form on their website at <http://www.tfs.net/~jashaw/nmra/n98/kcmo.html>

Reservations must be made with the Convention Hotel registrar, and **NOT** with the Marriott Hotel directly.

Transportation discounts are being offered to get you to Kansas City. Delta Air Lines is offering discounted fares, and Amtrak is offering a 10% discount on round-trip fares to Kansas City for travel between July 14th and the 29th. Contact Delta at (1-800) 241-6760, and refer to **File Number 105938A**. Contact Amtrak at (1-800) USA-RAIL (872-7245) and give the agent **Fare Code X-29R-961**.

Watch for your NMRA *Bulletin* in the next month or so, which will have up-to-the-minute listings of activities and of vendors at the NMRA National Train Show. Register as early as you can, and let's make a strong Potomac Division showing in Kansas City!

## HOME LAYOUT TOURS ARE BACK, AND WE'VE GOT 'EM!

You'll see in this *Flyer* that this quarter, we have four — yes, *four* — Home Layout Tours scheduled for this quarter!

With a million thanks to the single-handed organizational efforts of Potomac Division member Nick Kalis, there will be at least one layout tour offered each month until the rest of the year. In June, we're lucky enough to have two (the second one a week after the first), and as we go to press, there are *three* layouts scheduled for De-

cember!

In fact, Nick has been so devoted to the concept of members hosting members, he's got pledges from Division members to host tours clear through the end of 1999!

You'll find descriptions and maps on pages 2, 7, 8 and 9 of this *Flyer*. Be sure to thank your hosts when attending. (And, when you run in to Nick Kalis at these events, be sure to thank him, too!)

### Help Wanted

**Editor** — for Division publication with small but loyal following. Current Editor must relinquish post. Call (703) 391-0675, or see Page 4 of this *Flyer*.

POTOMAC DIVISION'S MAY HOME LAYOUT TOUR  
SATURDAY AND SUNDAY, MAY 2 AND 3, 1998  
JIM AND JOANNE STAPLETON'S IE&W RAILWAY  
38200 CHARLES TOWN PIKE, PURCELLVILLE, VA / 540-882-3886

The IE&W Railway is a Gauge 1 outdoor layout. The mainline is 526 feet (1/10 mile) of double track with multiple passing tracks. Operation is live steam or battery power. Although using a common track gauge, typical meets include operation of 1:13, 1:20, 1:22.5, 1:30 and 1:32 scale equipment.

Highlights of the Railway include an elevated ballasted deck, 20 ft. minimum radius curves, about 1700 feet of Code 215 nickel silver track, and a 14 x 30 foot covered steaming bay. Yards are still under construction.

Jim and Joanne traditionally host a cookout on Saturday in the early evening. If you wish to participate, please RSVP as soon as possible to the above phone number. A donation can be part of the food line.

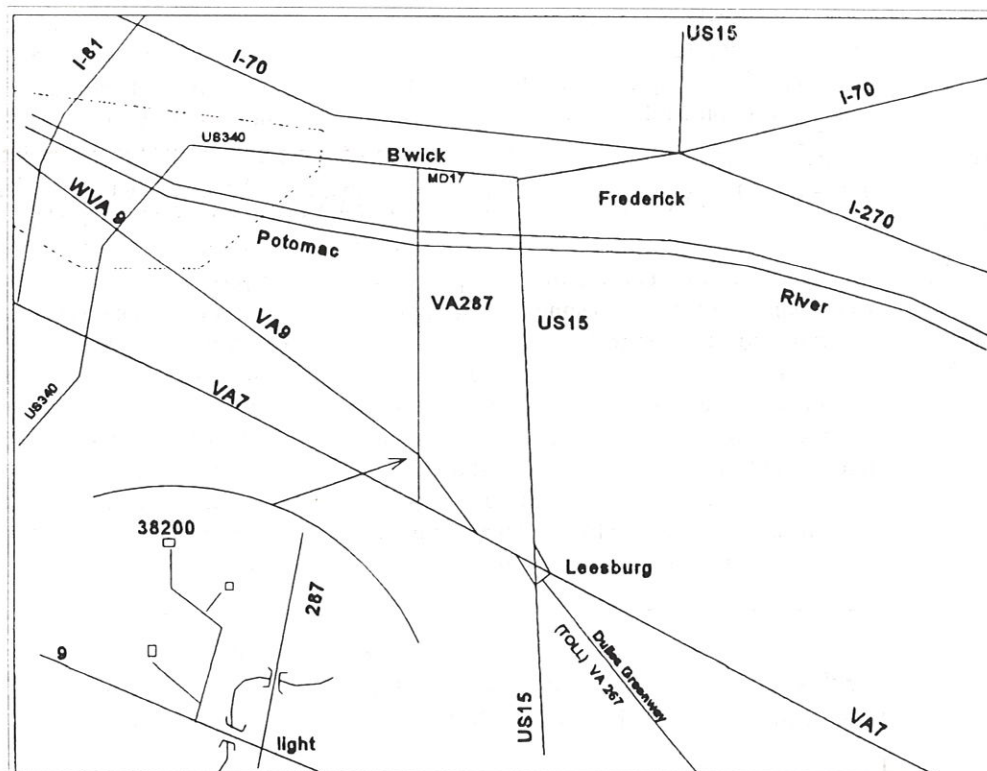
**DIRECTIONS (From Washington):**

From Maryland, take I-270 to Frederick, then take Rte 340 west to Rte 15 south to Leesburg.

From Virginia, take Rte 7 west to Leesburg.

**Once you get to Leesburg:**

Take Rte 7 west to Rte 9, exit right. Turn right at the bottom of the ramp. It is five miles to the light at Va. 287 (at the bottom of a hill). Go through the light and cross the bridge. The driveway is at the end of the bridge, about 200 feet from the light. Turn right and go to the blue house at the end of the driveway.





## The Potomac Division

Division 2 ("Potomac"), Mid-Eastern Region,  
National Model Railroad Association, Inc.

The Potomac Division territory includes: the District of Columbia; Montgomery, Prince George's, Charles, St. Mary's, and Calvert Counties in Maryland; Prince William, Arlington, Fairfax, Fauquier, Loudoun, and Rappahannock Counties in Virginia, as well as the independent cities of the area.

### ●●● Division Staff Roster ●●●

Superintendent	<b>Bob Minnis</b> (703) 391-0675 E-mail: <a href="mailto:kahlualab@aol.com">kahlualab@aol.com</a>
Senior Asst. Supt.	<b>Ken Jones</b> (301) 216-5210 E-mail: <a href="mailto:kjonesvim@aol.com">kjonesvim@aol.com</a>
Asst. Supt.	<b>Jim Stapleton</b> (540) 882-3886 E-mail: <a href="mailto:jim.stapleton@mindspring.com">jim.stapleton@mindspring.com</a>
Paymaster	<b>Garrett Nicholson</b> (301) 593-7699
Clerk	<b>Clinton Hyde</b> (703) 803-3068
Achievement Pgm. Rep.	<b>Ken Berthoud</b> (703) 354-1438 E-mail: <a href="mailto:bucane@erols.com">bucane@erols.com</a>
HO Module Crew	<b>Bruce Strickland</b> (703) 361-5620 E-mail: <a href="mailto:bstricklan@aol.com">bstricklan@aol.com</a>
No. Va. NTRAK	<b>Matt Schaefer</b> (703) 978-2946 E-mail: <a href="mailto:nvtrak@erols.com">nvtrak@erols.com</a>

## THE POTOMAC FLYER

is the quarterly newsletter of the Potomac Division

Editor	<b>Laura Hughes</b> 25998 Rose Lane South Riding, VA 20152-1764 (703) 327-2665 (home) (703) 327-6769 (fax) E-mail: <a href="mailto:MERPotomac@aol.com">MERPotomac@aol.com</a>
--------	--

Advertising in the *Potomac Flyer* is available. Per-issue rates are: \$5 for a Business Card (one-eighth page) block; one-fourth page, \$10; one-half page, \$20; full page, \$40. The back cover half-page rate is \$25 and is available on a first come, first served basis. Special rates are available for multi-issue purchases. Contact the editor for rate details and bulk discounts.

**Please note new deadline dates!!** Submission deadlines for all materials in each issue of the *Potomac Flyer* are: Spring issue, January 15; Summer issue, April 1; Fall issue, July 1; Winter issue, October 1. Mail all submissions to: Laura Hughes • Editor, *Potomac Flyer* • 25998 Rose Lane • South Riding, VA 20152-1764. Unless special arrangements are made, no materials will be returned.

**Change of Address:** Complete the enclosed Application/Change of Address form and send it to: Clerk, Potomac Division • P. O. Box 3204 • Manassas, VA 20108.

# POTOMAC DIVISION CALENDAR

## MAY

### 2 & 3 - Potomac Division Home Layout Tour

**Jim & Joanne Stapleton's IE&W Railway** (see Page 2)  
Purcellville, VA / Call (540) 882-3886 for information

**17 - NVNTrak Monthly Setup/Open House**  
Fairfax Station, VA/Call (703) 978-2946 for information

**18 - Northern Virginia Model Railroaders, Inc., Open House**  
W&OD Railroad Station, Vienna, VA  
1 pm - 5 pm/Call (703) 938-5157 for information

## JUNE

**6 - Manassas Railway Festival**  
Old Town Manassas, VA / 10 am - 4 pm  
Call (703) 361-6599 for information

**7 - Potomac Division Home Layout Tour**  
**Rick & Melly Wright's Beantown & Buffville Railroad** (see Page 7)  
Burke, VA / Call (703) 503-3168 for information

**13 - Potomac Division Home Layout Tour**  
**Peter & Carol Jobusch's East Serendipity Railway** (see Page 8)  
Rockville, MD/Call (301) 424-4933 for information

**20 - 21 - Great Scale Model Train Show**  
Maryland State Fairgrounds, Timonium, MD  
9 am - 4 pm Sat, 10 am - 4 pm Sun / Call (410) 730-1036 for info

## JULY

**11 - Potomac Division Home Layout Tour**  
**Evert Beekmann, Jr.'s B & O Railroad** (see Page 9)  
Winchester, VA / Call (540) 662-6395 for information

**11 - 12 - Great American Train Show**  
Showplace Arena, Upper Marlboro, MD  
11 am - 5 pm/call (630) 834-0652 for information

**18 - Northern Virginia Model Railroaders, Inc., Open House**  
W&OD Railroad Station, Vienna, VA  
1 pm - 5 pm/Call (703) 938-5157 for information

**18 - 19 - Greenberg's Great Train, Dollhouse & Toy Show**  
Chantilly Expo Center, Chantilly, VA  
11 am - 5 pm Sat, 11 am - 4 pm Sun/call (410)795-7447 for info

**20 - 26 - NMRA 1998 National Convention** (see Page 1)  
"Heartland Express," Kansas City, MO  
Call (913) 894-1255 for information

Local model railroad clubs may have their events listed here as space permits. Please send a schedule of your activities to Editor, *Potomac Flyer*, at the address shown at left.

## The View from the Keyboard

—Laura Hughes  
Potomac Flyer Editor

Things change.

Owing to the pressures of my *real* job — you know, the one that puts food on the table and disks in my computer — I've let Superintendent Minnis know that I'm forced to surrender my editorship of the *Potomac Flyer*.

I've never been much of a volunteer, and almost never for something I've never tackled before. When Pete Matthews approached me almost two years ago to take over editorial duties from him, I figured, "Hey, here's my chance to give something back to the hobby." Like everyone who's trying to exit gracefully says, "I've learned a lot." And I'm continuing to learn a lot — mainly, that I can't work a 60-hour, sometimes 6-day, week and still devote adequate time to this publication.

To those of you with whom I've been fortunate enough to meet and correspond, who have offered words of encouragement and congratulation, a very heartfelt "thank you" for that support. To those of you who I may have offended by sins of omission — and you know who you are — please know that I meant nothing personal by not including more of the articles you thought should be in this newsletter.

This is all by way of asking one or more of you to *please* step forward and volunteer your time, effort and knowledge to help keep the *Flyer* alive. It's a position that gives you access to both the Division Board of Directors *and* the membership, and it gives you AP points too (for both Volunteer AND Author awards, I believe)! You can get in touch with ANY of the Board members shown on the masthead on Page 3 — or call me up! I'd be willing and grateful to share what I've learned in the last couple of years, and hopefully this transition can be a smooth and painless one.

So thanks, gentlemen — and ladies, too, I know you're out there — for allowing me the opportunity to give the *Potomac Flyer* my best shot.

That was all I could do.

*Laura*

## Business Car

—Bob Minnis  
Division Superintendent

The Division's annual meeting/mini-convention was held on March 14. I want to thank the following clinicians who volunteered their time and knowledge: Bill Mosteller, Jim Stapleton, Harvey Heyser, Mat Chibbaro, Paul Morehead and Colin Weiner. An untimely accident (no injuries) prevented Bill Gruber from attending. Twenty-one entries competed in the popular vote contest. See Ken Berthoud's column for more details.

During the business meeting, Clinton Hyde was elected as the Division Clerk. He replaces Pete Matthews who, by now, is unpacking in his new home in Colorado. The other Board members were re-elected. The membership approved the new Bylaws, which now requires Division members to be members of both MER *and* NMRA.

Any one of the three NMRA membership levels (regular, associate or family) is acceptable. Individuals who do not become members can still attend Division activities, but can neither hold office nor vote on business matters. I realize that not everyone will agree with this tri-level membership requirement. What we can agree on is that this hobby is "fun" and we should share the knowledge and enjoy its many facets. Lastly, we need to ensure that America's railroad heritage is passed on to future generations.

As has been mentioned in my past columns and by others in this FLYER, if your organization, club, group, etc. has an event that is of interest to other Division members, please pass this information on to the Editor or Clerk. The more widespread the information, the larger the attendance at your event. Additionally, it lessens the chance of two or more major railroad-related events being scheduled on the same date(s). Such was the case for the Mini-Convention, the NTRAK show at Landmark, and the Winchester show. The limited number of weekends in a year (still only 52) will not allow most events to have exclusive use of any given weekend. At least those making the decisions on schedules will make them with the knowledge of what other events are planned.

In closing, I again want to thank Pete Matthews for his time and dedication to the Division over the past seven-plus years. Pete served as the *Flyer* Editor for over five years and then took on the duties of Division Clerk. The successes of the Division during this time are a direct result of his hard work, railroad knowledge and experience. He will be missed. GOOD LUCK in Colorado and wherever the tracks of life lead you in the future.



## Achievement Notes

— Ken Berthoud

NMRA Achievement Program Representative

Congratulations and a special thanks to all the entrants and judges participating in our Division's Model Contest and merit judging at our Mini-convention in March. We had 21 entries from a different mix of entrants. The overall craftsmanship was excellent, with six models earning merit awards.

Our merit judges and contest officials were Monroe Stewart, Mat Chibbaro, Bill Roman, John Paganoni and Jeff Martello. Many thanks for your fine efforts.

The merit awards were given for the following models: Dick Kafka, Basalt Eating House / Railroad Hotel and Basalt Station; Roy Gurnham, Estep & Sons Lumber Building and Estep & Sons Coal Trestle; Don Watson, Freelance Water Tank and Bobber Caboose.

The popular vote contest is a peer vote where modelers attending the Mini-convention for their favorite models in each of the categories. The results were:

Superintendent's Award — Don Watson for his Freelance Water Tank

Structures — **1st** Don Watson -Freelance Water Tank; **2nd** Jeff Martello -Backwoods Shack; **3rd** Roy Gurnham -Estep & Sons Coal Trestle

Cars — **1st** Ken Heinen -Hot Metal Car; **2nd** Bill Cox -EBT Wood Boxcar; **3rd** Pete Matthews -50' Ribbed Boxcar

Caboose — **1st** Don Watson -Bobber Car; **2nd** Harry Baas -B&O Caboose

Favorite Train — **1st** Bill Cox -Hon3 Train

Steam Locomotive — **1st** Ken Jones -B&O 2-10-2; **2nd** Bill Cox -HOn3 Locomotive

Passenger Car — **1st** Bill Cox -Hon3 Passenger Car

Diorama — **1st** Roy Gurnham -Estep & Sons Diorama; **2nd** Evert Beekmann -Access Hatch Cover

### Excerpts From the National AP Staff Newsletter

#### Kitbash Awards

The AP Department is again awarding plaques in the (national) model contest which we call the "AP Kitbash Award" for the highest scoring Merit award winner in passenger cars, freight cars, locomotives, on-line structures, and off-line structures. The rules are few and simple:

1. Build a Merit Award-winning model using 40% kit or commercial parts.
2. Trucks, couplers, and driving mechanism do not count towards the 40% content of the kit or commercial parts.
3. List all the kit or commercial parts and where they are used on the model.
4. The model will be judged as part of the regular model contest.
5. The highest scoring eligible model in each category will be the winner.

#### Judging Seminar

A seminar will be conducted at the Kansas City Convention on judging models for contests. The seminar will be open to all potential judges and interested modelers.

---

## Bulletin Board

*Things for sale, Help Wanted, etc.*

---

**Got Something to Sell/Trade?** — Just send a brief description of your item(s), along with your name, address, and phone number to: **Bulletin Board**, c/o Laura Hughes, 25998 Rose Lane, South Riding, VA 20152-1764. Or phone in your ad copy to 703-327-2665. Let's get that stuff movin'!

**Asbury Model RR Club, Gaithersburg**, is looking for a Good Samaritan (who works cheap!) to paint one of our locomotives in CSX Worktrain Orange. We supply decals; no super-detailing required. Also need a painter for a MARC loco in black/silver/red. We supply decals. Amateur work okay — we just don't have anyone who knows how to airbrush! Visit us any Monday night, then decide if you'd like to help. Call Ken Jones, Senior Superintendent, Potomac Division, at (301) 216-5210.

**NOTE:** Due to space restrictions, we regret that the *NVTrak News* and *Potomac HO Crew News* columns will not appear in this issue. They will return in next quarter's issue.

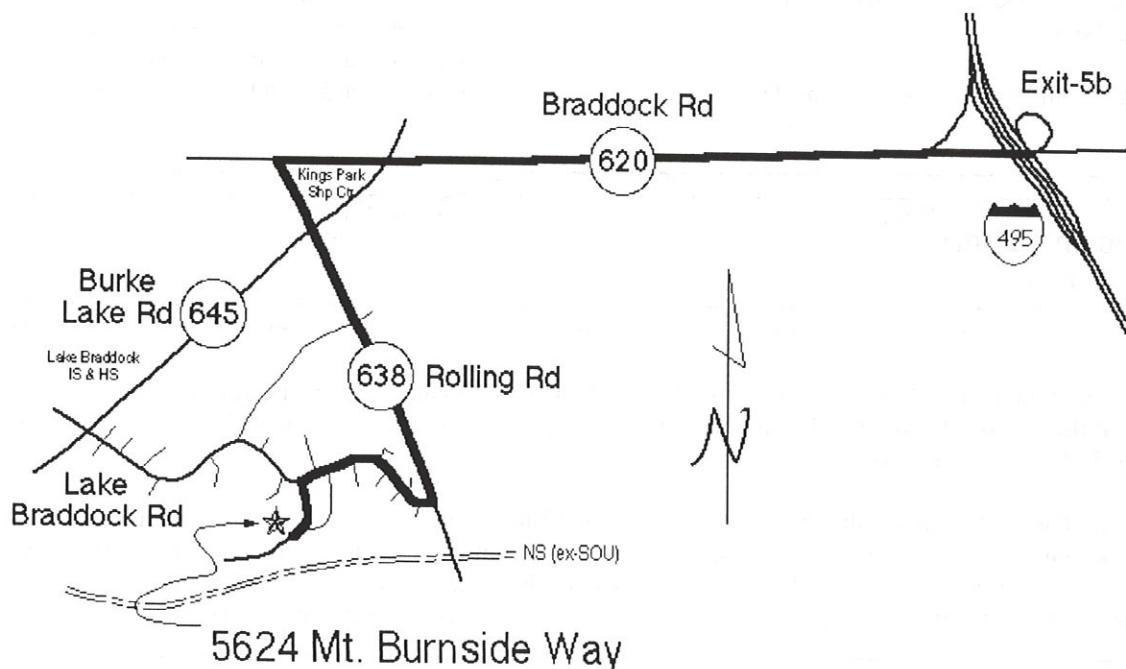
POTOMAC DIVISION'S JUNE HOME LAYOUT TOUR #1  
SUNDAY, JUNE 7, 1998, 1 P.M. - 5 P.M.  
RICK & MELLY WRIGHT'S O SCALE BEANTOWN & BUFFVILLE RAILROAD  
5624 MT. BURNSIDE WAY, BURKE, VA / 703-503-3168

First visited in February 1997, the Beantown & Buffville (B&B) Railroad is Rick and Melly Wright's freelance O-gauge Hi-Rail layout. Combining the historic legacy of Lionel with today's emphasis on prototype realism and electronic sound systems from a number of manufacturers, the fully-scenicked 22' x 34' layout is designed specifically to handle all O gauge trains manufactured between 1919 and 1998. The track plan features a 112-foot double-track mainline with a 4' x 12' yard and deepwater port facility, and — new for 1998! — 2' x 12' logging railroad switchback based on the prototype at Cass, West Virginia

**DIRECTIONS:**

From the Beltway (Rte 495), take Exit 5B in Virginia and go west on Braddock Road. Make a soft left turn at Va Rte 645, Burke Lake Road (on the right will then be the Kings Park Shopping Center). Then turn left at light onto Va Rte 638, Rolling Road.

Continue to Lake Braddock Road (next light), where you turn right. Go down five streets to Mt. Burnside Way, and turn left. 5624 is on the right. (A "Bennington '76" battle flag will be flying in front of the house, weather permitting!)



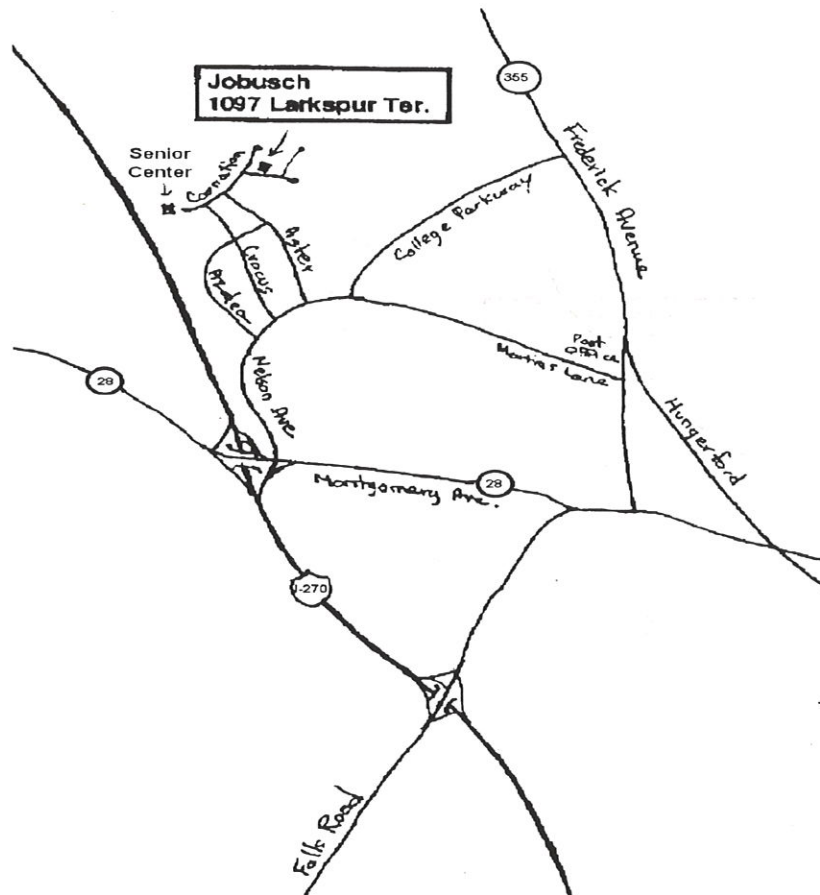
POTOMAC DIVISION'S JUNE HOME LAYOUT TOUR #2  
SATURDAY, JUNE 13, 1998, 1 P.M. - 5 P.M.  
PETE & CAROL JOBUSCH'S EAST SERENDIPITY RAILWAY  
1097 LARKSPUR TERRACE, ROCKVILLE, MD / 301-424-4933

Pete and Carol Jobusch's East Serendipity garden railway had its roots (no pun intended) in the "Tweetsie" — the East Tennessee and Western North Carolina narrow-gauge railroad (which is North Carolina's first and oldest theme park). The East Serendipity was dug by hand, and its track has a minimum radius of eleven feet. Among its notable points are its 6-foot tunnel at Mount Ajuga, a second loop of track with a bridge crossing a fishpond, and the collection of original steel sculptures throughout the garden railway itself. This is, from Pete's description, a multi-scale railroad — capable of G scale and live steam, and variations of those scales. This will be a "rain-or-shine" home layout tour — if the weather doesn't cooperate, the outdoor trains can be watched from inside the basement, where the Jobusches also have an HO layout of Märklin trains, done up as a tinplate layout!

**DIRECTIONS:**

Go north on I-270 to Exit 6A — Montgomery Avenue, but it really exits onto Nelson Street. Get into the left lane on the exit ramp. **DO NOT** turn onto Montgomery Avenue at the traffic light — stay on Nelson Street until you reach the first STOP sign at Crocus Drive.

Turn left onto Crocus. Drive to end. Turn right onto Carnation Drive. Drive two blocks. Turn right onto Larkspur Terrace, to the second house on the left (red brick tri-level with almond and black trim).



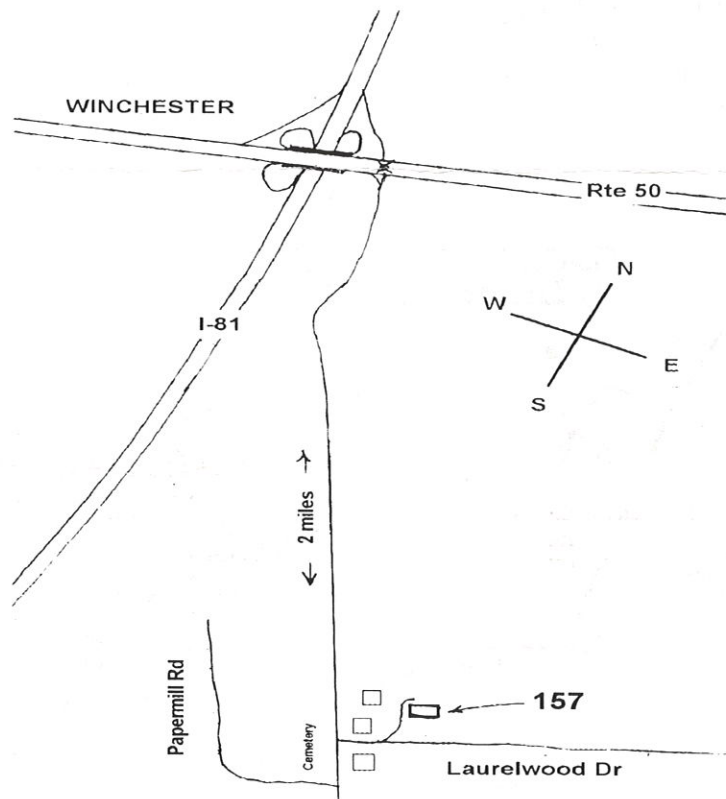


POTOMAC DIVISION'S JULY HOME LAYOUT TOUR  
SATURDAY, JULY 11, 1998, 1 P.M. - 5 P.M.  
EVERT BEEKMANN'S FREELANCE HO LAYOUT  
157 LAURELWOOD DR., WINCHESTER, VA 22602 / 540-662-6395

Evert Beekmann's HO layout is, by his own admission, freelance, but he says it "leans toward the B&O in the '40s and '50s." It's in the shape of a "C"; the main is dogbone-shaped, with a city and yard at each end. Except for one branch-line, all the track is laid and the layout itself is about 50% scenicked. The layout is 11-1/2 feet at its widest, and is 20 feet long.

**DIRECTIONS:**

Go west on Va. Rte. 50 to Winchester, and make a left at Rte. 522 (before you come to I-81). Go for about two miles to a left turn at Laurelwood Drive (across from a cemetery). The driveway for 157 Laurelwood is on the left, almost immediately after making the turn onto Laurelwood.





# SUPPORT YOUR LOCAL HOBBY SUPPLIER!

And tell them you saw their ad in the *Potomac Flyer*!

## THE MOST HO & N VEHICLES EAST OF THE ROCKIES

Wholesale and Retail Vehicles and Structures

*Authentic Miniatures*  
of the american scene

Roger R. MILAM  
P.O. Box 235  
Burkittsville, MD 21718-0235

301-371-9436  
Sunday-Thursday  
9 AM - 9 PM



*Bruce B. Blackwood*

9920 Rhode Island Avenue - College Park, MD 20740 - 301-982-5032  
Fax 982-9660

- LIONEL AUTHORIZED VALUE ADDED DEALER
- AUTHORIZED LIONEL SERVICE STATION
- LGB AUTHORIZED RETAILER
- MTH ELECTRIC TRAINS

**KMA JUNCTION**

MODEL TRAIN SUPPLIES & SERVICE

CAVALRY VILLAGE SHOPPING CENTER  
9786 CENTER STREET  
MANASSAS, VIRGINIA 20110

STEVE FORTES  
(703) 257-9860

PHONE  
(410) 539-6207

TOLL FREE  
(888) TRAINS-5  
(888-872-4675)

FAX  
(410) 685-1357



*M. B. Klein, Inc.*  
MODEL TRAIN HEADQUARTERS



TED KLEIN  
President

162 N. GAY STREET  
BALTIMORE, MD 21202

**LEESBURG**  
**HOBBY** Est. 1980

DONNA HEIRONIMUS  
RICHARD HEIRONIMUS

53-B Catoctin Circle, NE  
Leesburg, VA 20176  
(703) 777-1477  
leehob@erols.com



HARRY & NANCY SPICER  
(410) 374-1005  
1-800-821-6377

**MAIL BAG HOBBIES**

MODEL TRAINS AND ACCESSORIES  
RETAIL MAIL ORDER

SHOWROOM  
16817 GORSUCH MILL RD.  
UPPERCO, MD 21155

BOX TWO NINETEEN  
MONKTON, MD 21111

**Your business card**  
**coulda been here!**

**Call (703) 327-2665 to get**  
**YOUR card in the next edition!**

**MAINLINE HOBBY**  
**SUPPLY**



**SCALE MODEL RAILROAD SUPPLIES**

15066 Buchanan Trail East  
Blue Ridge Summit, PA 17214  
(717) 794-2860  
(717) 794-5594 FAX

HOURS:  
Mon-Wed 10-8 Th-Fri 10-9  
Sat 10-5/Sun 1-5  
Brian & Bonnie Wolfe

# SUPPORT YOUR LOCAL HOBBY SUPPLIER!

And tell them you saw their ad in the *Potomac Flyer*!



## TRAINS and HOBBIES

*Mayberry & Sons, Inc.*

Trains & Accs. • All Scales • Art Supplies  
Doll Houses • Plastic Models • Kites

Hours - Mon. 4 pm - 9 pm  
T - F 12 pm - 9 pm  
Sat. 10 am - 6 pm  
Sun. 10 am - 5 pm

Phone: (301) 564-9360  
10527 Summit Ave.  
Kensington, MD 20895

## Obies Trains

OPEN House  
10 am - 5 pm



6461 Edsall Rd. #405  
Alexandria, VA 22312

Phone: (703) 684-1111  
Fax: (703) 684-1111



John A. Glaab  
(301) 498-9071

## SPECIALIZING IN BRASS MODEL TRAINS

NEW - USED  
Bought - Sold - Traded  
VISA & MC Accepted

201 Main Street

Laurel, MD 20707

Railroad Photos

Video: VHS

## RAILHEAD VIDEO PRODUCTIONS

RICHARD W. CLARK  
(301) 565-5126

607 McNeill Road  
Silver Spring, Md. 20910



George Hughes  
(703) 327-6769

## SPRINGHAVEN SHOPS

Manufacturer of DCC-Compatible Power Supplies

AUTHORIZED DIGITRAX COMMAND CONTROL DEALER

25998 Rose Lane  
South Riding, VA  
20152-1764

<http://members.aol.com/sprshops/homepage.html>

E-mail: [sprshops@aol.com](mailto:sprshops@aol.com)

## TSG HOBBIES

*Tony Tripi*

MODEL RAILROADING - PLASTIC MODELS  
STAMP & COIN COLLECTING

ROCKETS - DOLLHOUSES - MAGIC - GAMES

251 WEST LEE HIGHWAY, 691 WARRENTON CENTER  
WARRENTON, VA 20186-2033 PH/FAX (540) 347-9212  
Internet Web Site: <http://www.nmsinc.com/tripi/tsg.htm>  
email: [tripi@nmsinc.com](mailto:tripi@nmsinc.com)

TOLL FREE: 1-88-TRAINS-88 (1-888-724-6788)

HOURS: MON-SAT 10-6, THUR TILL 7:30PM, SUN NOON-4

**Your business card  
coulda been here!**

**Call (703) 327-2665 to get  
YOUR card in the next edition!**



## TRAIN DEPOT

ALL SCALE SALES & SERVICE  
DEPARTMENT 56 SNOW VILLAGE  
BUILDINGS & VILLAGE ACCESSORIES

AUTHORIZED VALUE ADDED DEALER  
HERITAGE • LIONEL SERVICE STATION # 474  
LGB TRAIN STOP

SUDLEY CORNER CENTER  
7214-16 NEW MARKET COURT  
MANASSAS, VIRGINIA 22110

(703) 335-2216  
METRO — 818-9629



# POTOMAC DIVISION

Division 2, Mid-Eastern Region, National Model Railroad Association, Inc.

## MEMBERSHIP APPLICATION AND INTEREST SURVEY

The **Potomac Division** provides various activities for all interested model railroaders, such as home layout tours, prototype tours, and a Mini-Convention every March. We publish a quarterly newsletter, the *Potomac Flyer*, detailing Division activities. We proudly boast one of the greatest concentrations of model railroading talent in the country with over 10 NMRA Master Model Railroaders in our area, as well as hundreds of other outstanding modelers.

The **Potomac Division** encompasses: Washington, DC; Calvert, Charles, Montgomery, Prince George's, and St. Mary's Counties in Maryland; and Arlington, Fairfax, Fauquier, Loudoun, Prince William, and Rappahannock Counties in Virginia, as well as local independent cities. Local residence and MER or NMRA membership are not required for Division membership. Anyone interested in learning more about model railroading, improving their modeling skills, and enjoying the company of fellow model railroaders is invited to join the **Potomac Division**.

### PERSONAL INFORMATION

Check here to indicate a change of address: ☐

Name:

Home Phone:

Street Address or P. O. Box:

Work Phone:

Additional Address:

\*-NMRA and MER use birthdate for demographic purposes as well as Life Membership applications.

NMRA Memb. No:  Exp. Date:

MER Memb. No:  Exp. Date:

Birthdate\*:  NOTE: This information required by MER and NMRA

City:  State:  ZIP + 4:  E-Mail address:

Occasionally we make our mailing list available to carefully selected model railroading-related companies.

If you do **not** wish to have your name included, check here: ☐

### INTEREST SURVEY

Primary Scale  Secondary Scale

Favorite Railroad(s) & Prototype(s) Modeled:

Do you have (Check all that apply):

☐ A layout or module? ☐

☐ Narrow gauge interest? ☐

☐ Module interest? ☐

☐ Traction interest? ☐

☐ Would you host a Home Layout Tour?

If so, may we visit within:

☐ 6 months ☐ 12 months ☐ 18 months

Please list NMRA Special Interest Groups (SIGs), model railroad clubs, and railroad historical societies to which you belong:

**New and renewing members:** Please include a short paragraph or two (optional) describing yourself and your railroading interests for possible inclusion in upcoming *Call Board* columns. (See the current issue of the *Potomac Flyer* for examples.)

### DUES CALCULATION

Please fill out this section completely, including whether you are new or renewing. Renewing NMRA and MER members, please supply your birthdate, membership numbers, and expiration dates in the Personal Information section above. **Incomplete information may delay your renewal.**

**Potomac Division:** Dues are \$2 per year. Members receive the quarterly *Potomac Flyer*. Membership expires on December 31 of the current year. New members joining after November 30 will be enrolled through the end of the following year.

	New	Renewal
\$ <input type="text"/>	<input type="checkbox"/>	<input type="checkbox"/>

**Mid-Eastern Region:** Dues are \$8 per year. Members receive the bimonthly *MER Local*. Renewing members, please supply your birthdate and both your MER and NMRA membership numbers and expiration dates in the Personal Information section above. You may also write MER directly at: The Mid-Eastern Region, Inc. • Office Manager • 13212 Bellevue St. • Silver Spring, MD 20904. **NOTE: You must be a member of the NMRA to be a member of the MER.**

\$ <input type="text"/>	<input type="checkbox"/>	<input type="checkbox"/>
-------------------------	--------------------------	--------------------------

**National Model Railroad Association:** Dues are \$32 per year, or \$16 per year for an Associate Membership. Members receive the monthly *NMRA Bulletin*. Renewing members, please supply your birthdate and NMRA membership number and expiration date in the Personal Information section above. You may also write NMRA directly at: National Model Railroad Association, Inc. • Headquarters Office • 4121 Cromwell Rd. • Chattanooga, TN 37421. **NOTE: Associate members DO NOT receive the NMRA Bulletin.**

\$ <input type="text"/>	<input type="checkbox"/>	<input type="checkbox"/>
-------------------------	--------------------------	--------------------------

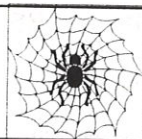
Please make your check payable to **Potomac Division**. Send check with your completed application to:

\$ <input type="text"/>	<b>TOTAL</b>
-------------------------	--------------

Clerk, Potomac Division • P. O. Box 3204 • Manassas, VA 20108

The Division will forward National and Regional dues. Allow 6 - 8 weeks for processing.

WEBSITES OF INTEREST TO  
POTOMAC DIVISION MEMBERS



Just a few new websites this time, of local modeling interest.

Our own Potomac HO Module Crew is going through some changes for the better. Come visit them on-line at:  
<http://members.aol.com/pmchorr01/PMC-Frame.html>

We've heard from our friends at NVNTrak, who have a brand new website! They now live at:  
<http://www.nvntrak.org>

The Prince William Model Railroad Club has also weighed in with a new site. Find them at:  
<http://www.pwmrc.org/>

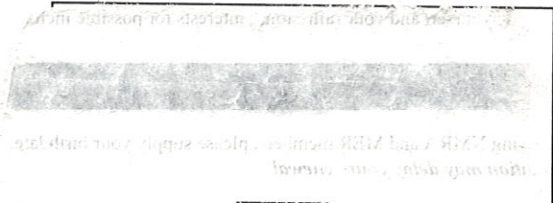
The Gaithersburg Model Railroad Society can be found at:  
<http://mmm.mbhs.edu/~mney/gmrs/index.html>

The Northern Virginia Model Railroaders, Inc., has their own website at:  
<http://www.geocities.com/Heartland/Plains/6120>

And the Washington, Virginia & Maryland Garden Railway Society — hosts of last year's annual Garden Railway Convention in Crystal City — look forward to your visit at:  
<http://gramercy.ios.com/~btolgb/wvmgrs.html>

If you stumble on a website that you think would be of interest to your fellow Division members, please share it with us! Send e-mail to: [MERPotomac@aol.com](mailto:MERPotomac@aol.com)

**IF YOUR LABEL'S HIGHLIGHTED — THIS IS YOUR LAST ISSUE!!!**  
**Please renew your Potomac Division membership today — at \$2 a year, it's still the best bargain in model railroading!**



The Quarterly Newsletter of  
Division 2 ("Potomac") — Mid-Eastern Region  
National Model Railroad Association, Inc.  
P. O. Box 3204 • Manassas, VA 20108

**The Potomac Flyer**

NON-PROFIT  
DENVER P&DC ISS#6 10-56 02/01-98  
PAID  
MANASSAS, VA  
PERMIT NO. 234