

Spring Quarter — March to May, 1993

# The Dixie Flyer

The Quarterly Newsletter Of Division 2 ("Dixie"), Mid-Eastern Region,  
National Model Railroad Association, Inc.

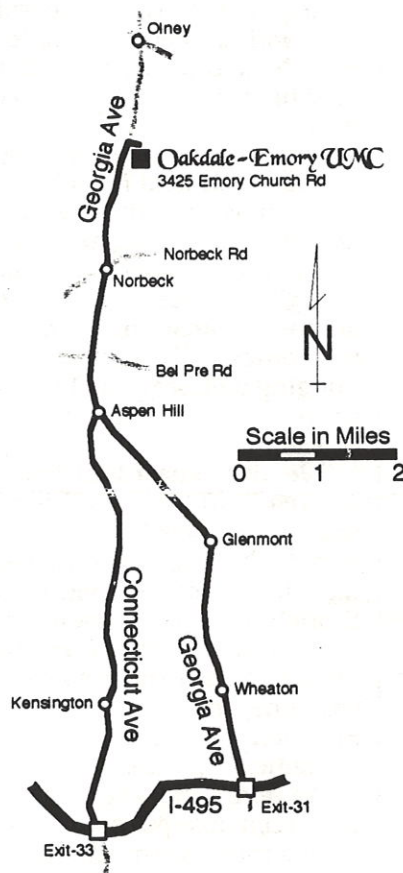


## Tony Koester to Speak at March Mini-Convention

Dixie Division's annual March Mini-Convention will be held Saturday, March 13th, from 9 A.M. to 4 P.M., at the Oakdale-Emory United Methodist Church, 3425 Emory Church Rd. (the intersection of Georgia Avenue and Emory Church Rd.), Olney, Maryland. Admission is \$3 but anyone who enters one or more models in the Popular Vote contest or for merit judging gets in for \$2.

Tony Koester, author and *Model Railroader* columnist has been invited to speak at lunch. Barring bad weather in the foothills of New Jersey that weekend, he plans to be here. Tony is best known for his "Trains of Thought" column in *Model Railroader* and for many articles on and photographs of his Alleghany Midland Railroad which have appeared throughout the model railroading press. What with all the changes his layout is experiencing as a result of back-dating from the diesel to steam era, he has chosen his layout as the subject of his talk. This should be a marvelous chance to hear from one of the hobby's most respected voices on one of its acknowledged masterworks.

As many of you should recall, Oakdale-Emory hosted us two years ago. It has plenty of space for clinics and we are still accepting clinics (we can accommodate three per hour so we can use up to twelve). If you are interested in giving a clinic, perhaps even getting one ready to present at the NMRA



## Inside

March Mini-Convention.....	1
Spring Layout	
Tours.....	3
Winter Recap.....	3
Future Events.....	4
Geithersburg Loop	
Modelers.....	4
Call for	
Nominations.....	5
Database Notes.....	5

## Events

March Mini-Convention.....	1
April Home Layout	
Tour.....	8
May Home Layout	
Tour.....	7

## Depts

Staff Roster.....	2
Calendar.....	3
AP Notes.....	4
Dixie HO Module	
Team News.....	6
Northern Virginia	
NTrak News.....	6
Business Car.....	9
Head End.....	9
Dixie Membership	
Application.....	10

## Mini-Convention Timetable March 13th, 1993

Registration and Hospitality Hour.....	9 - 10 A.M.
Entries for Model Contests and AP Merit Judging accepted.....	9:30 - 11 A.M.
Clinics (two one-hour sessions).....	10 A.M. - 12:05 P.M.
Contest judging.....	11 A.M. - 1:15 P.M.
Lunch* with talk by our guest speaker, Tony Koester.....	12:10 - 1 P.M.
Annual Business Meeting.....	1 P.M.
Contest awards.....	1:15 P.M.
More Clinics (two one-hour sessions).....	1:30 - 3:35 P.M.
Door prize drawing.....	3:40 P.M.

\*—Lunch will be provided by the Oakdale-Emory men's group for a reasonable donation



## Mini-Convention, cont'd

meet in Valley Forge this summer, here is your chance. Remember, you can earn points towards your Achievement Program Author certificate for clinics involving written handouts. Please contact Clint Smoke at the number given at right if you are interested.

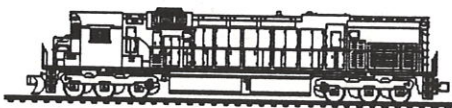
Clinics tentatively scheduled include: Brian Brendel, Sculpting Scenery in Styrofoam; George Hughes, Remotoring Locomotives; Timothy Tilson, British & European Railroads, a Slide Show; and Bob Minnis, Building Modular Model Railroad Benchwork. Bob's clinic will involve actual construction of an NMRA standard module frame. The module will be auctioned off after the clinic (minimum bid, \$30) with proceeds going to the Dixie Division. Note that the basic 2' by 4' frame may be used for either an HO or NTrak module.

For those of you working towards the various technical NMRA achievement certificates, we will have Achievement Program merit judging along with our annual Popular Vote model contests. Models brought for merit judging or for the popular vote contest should be presented to the contest officials from 9:30 to 11 a.m. Judging will begin at 11 with awards presented after the business meeting at lunch.

We also expect that both the HO Module Team and the Northern Virginia NTrak will set up their layouts. We plan to use part of the large meeting room where we have lunch for the module teams. Although we are not cramped for space, space will still be at a premium. Therefore please contact the respective module team coordinators (Bob Minnis for HO, Matt Schaefer for NTrak) if you are considering bringing a module.

As noted elsewhere in this newsletter, the ostensible purpose of the Mini-Convention is our annual business meeting and election of officers. This is our annual report to the Dixie membership and we expect you all to be there. OK, we would like you all to be there. We will also elect one new board member as a replacement for Monroe Stewart, who is stepping down from the Board of Directors after several years of faithful service.

....



## The Dixie Flyer

Is the Quarterly Newsletter of Division 2 ("Dixie")  
of the Mid-Eastern Region  
of the National Model Railroad Association, Inc.

Editor: Peter K. Matthews

Publisher: Bruce Strickland

The Dixie Division territory includes: the District of Columbia; Montgomery and Prince Georges Counties, Maryland; Prince William, Arlington, Fairfax, Loudoun, Frederick, and Clarke Counties, Virginia, as well as the independent cities of the area.

### • • • Divison Staff Roster • • •

<b>Superintendent</b>	Monroe Stewart 4908 Woodland Blvd. Oxon Hill, MD 20745 (301) 630-7565 (home)
<b>Asst. Superintendent</b>	Jeff Martello P.O. Box 1206 Bethesda, MD 20827 (301) 365-0925 (home) (301) 530-3176 (work)
<b>Paymaster</b>	Robert G. Minnis 3016 Dower House Dr. Herndon, VA 22071 (703) 391-0675 (home) (703) 264-2535 (work)
<b>Director-at-Large</b>	Clinton H. Smoke, Jr. 9928 Coffey Woods Road Burke, VA 22015 (703) 425-5077
<b>Clerk</b>	Nick Kalis P.O. Box 1412 Falls Church, VA 22041-0412 (703) 578-3051
<b>Achievement Program Representative</b>	Bruce Strickland 10766 Tullamore Ct. Manassas, VA 22111 (703) 361-5620 (home) (703) 569-6800 (work)
<b>NTRAK Coordinator</b>	Matt Schaefer (703) 978-2946 (home)
<b>Editor, Dixie Flyer</b>	Pete Matthews 4416 Longworth Sq. Alexandria, VA 22309 (703) 360-2313 (home)

Upcoming Board meetings and locations:  
Mar 17, Stewart; Apr 14, Kalis; May 12, Minnis.

### Have You Paid Your 1993 Dixie Dues?

Please note that just because you have received a *Dixie Flyer* doesn't mean your membership is in good standing. The *Dixie Flyer* is mailed to all NMRA members in the National Capital area as an information service, especially for those new NMRA members, and as a service to the hobby in general. See the page 9 to find out how to join the Dixie Division, or to catch up on your dues (still just \$2!). If you are new to the NMRA and haven't yet joined the Dixie Division, join now and join the fun!



## S-O...

### This Spring's Layout Tours

To get away from the standard mix of HO and N scale layout tours that form the bulk of our fare, we will try something new this spring, being hosted by a trio of S and O scale modelers. First up on Sunday, April 18th, 1 to 5 p.m. is Sam Powell and his famous S-gauge "Penn Creek Valley RR." This layout has been featured in several publications and also in one of Model Railroader's videos. The South Penn Valley ranks as one of the world's best S-gauge layouts and is certainly worth the trip to Gaithersburg, Maryland. For more details, please refer to page 8.

May 9th we will have a pair of O-scale narrow-gauge layouts: John Peterson's On2 "Sandy River & Rangeley Lakes Railroad" and George Johnson's On3 "Cameron Valley Railroad." The double-tour will be held on Sunday, May 16th, from 1 to 5 p.m. Both layouts are in Fairfax County within a short distance of one another, so plan a full afternoon of fine O-scale fun. John's layout was on our Fall MER Convention layout tour list and is worth a second visit. In addition to George's layout, we hope also to see his live steam, 1-inch scale USRA Light Pacific. Details about both layouts may be found on page 7.

....

### Winter Summery (oops!, Summary)

Just after going to press with the last issue of the Dixie Flyer in November, the Dixie Division was hosted by the Chesapeake & Patuxent Model Railroad Club in Prince Frederick, Maryland. Those who braved the trek were treated not only to this active club layout, but also to Chuck George's HO-scale Cumberland & Penn-

sylvania Railroad. The Chesapeake & Patuxent club layout is very much a work in progress. Trains are already operating and most track is laid, but scenery is just now going up. The skill displayed by the club members so far bodes well for successful development of the layout into one of the truly fine club displays. Chuck George's, on the other hand, features fine scenery. His layout is a room-filling "island" plan with the aisle-ways around the outside. Thanks again to Chuck, and all the members of the Chesapeake & Patuxent for sharing their work with us. We sure enjoyed seeing it.

Come December, the Dixie board was pretty well exhausted after planning and executing the Fall MER Convention and therefore chose not to sponsor any official division event. Our HO Module Team, however, was quite busy with set-ups three out of four weekends that month, one at Fairfax Station, followed by two at the National Capital Children's Museum in the District. Bob Minnis reports on both events in the Module Team Notes on page 6.

For our January event we visited none other than our Division Superintendent, Monroe Stewart and his incomparable Hooch Junction Railroad. Everyone who saw it came away in awe of this immense (20 by 40 foot!) N-scale layout (that's equivalent to 40 by 80 feet in HO, or a whopping 80 by 160 feet in O!). Even those of us who have visited before cannot get over it: the scenery and scenic details, the sheer number of railroad cars, and the variety and number of locomotives (I stopped counting at 110). Of course, we cannot but also mention the ever-present good hospitality of Monroe himself. Monroe's layout has been featured in part or

## Spring Layout Tours

## Winter Recap Calendar



### • • • Dixie Division Calendar • • •

(nn)—Details on page nn of this *Dixie Flyer*. ‡—Details in an upcoming *Dixie Flyer*.

Date	Event	Time	Location
Feb 28	Dixie HO Module Team Mtg.	2-4p	Vienna, VA (6)
Mar 13	Dixie March Mini-Convention	9a-4p	Olney, MD (1)
Mar 13	NVMR Open House	1-5p	Vienna, VA
Apr 18	Dixie Home Layout Tour	1-5p	Gaithersburg, MD (8)
Apr 24	NVMR Open House	1-5p	Vienna, VA
May 9	Dixie Home Layout Tour	1-5p	Fairfax Co., VA (7)
May 30	NVMR Open House	1-5p	Vienna, VA
August	NMRA National Convention		Valley Forge, PA

Local model railroad clubs may have their events listed here if space permits. Please send a schedule of your activities to Pete Matthews, editor of the *Dixie Flyer*. See page 2 for his address.



**Winter Recap,  
cont'd**

**Future Events**

**Gaithersburg  
Loco Modelers**

**Achievement  
Notes**

in full in recent issues of *N Scale*, *Model Railroading*, and *Railmodel Journal*.

As I write this, we are still four weeks away from our visit to John Armstrong's O-scale Canandaigua Southern. Having never visited this famous layout, I cannot pull the editorial sleight-of-hand and report in the future-perfect tense. Suffice it to say, that I will report on this layout in our summer issue this coming June.

....

**Future events, but where?**

The Dixie Division is looking ahead to several events. One suggestion is a swap meet, perhaps to be held in September, 1993. As of the moment, we have yet to establish a location. If you know of a place where we can hold such a meet, please contact one of the Dixie staff members listed in the roster on page 2. The site should have room for upwards of 50 people at a time and lots of tables on which items for swapping can be shown.

Looking ahead to next year's March Mini-Convention, we would also like to get a jump on lining up a location. It should be held in Northern Virginia, in keeping with our policy of alternating between Virginia and Maryland. If you have access to a large facility, one that can accommodate several clinics, a luncheon and business meeting, and still have room left over for the our module teams to set-up, please contact one of the Dixie staff.

....

**New Club Seeks Members**

—Rev. Ken Jones

The Gaithersburg Loco Modelers is a new model railroad club presently forming to support and continue the initial work by two retirees at the "415" Building of Asbury Methodist Village in Gaithersburg, Maryland. The club has a 12' x 22' HO pike, already 50% scenicked and capable of running two or three trains.

Outside participants are desperately needed to contribute any time they can. One insider must be present when outside club members are present, but this is not a problem since the insiders are retired. Almost no electrical work has been done, let alone electronics. Work remaining to be done includes wiring turnouts, lighting buildings, building bridges, installing crossing flashers, and converting a considerable number of cars to Kadee couplers.

Any interested Dixie or MER member may call me at (301) 216-5210 for an evening visit any night convenient to you. We need to fix one night to establish a work pattern. At this time Monday night is club or work night (all work, no meetings).

The layout is open to residents and guests every evening and for Sunday brunch. Because this is essentially a show-loop-style layout, little in the way of prototypical operations, such as switching, are planned. While there is a steady stream of visitors during regular meeting hours, most visitors stay only a few minutes. All the senior residents bring their kids and grandkids in to see the trains.

....

**Achievement Notes**

—Bruce Strickland

There has not been much Achievement Program activity this past three months. Several Dixie Division members earned Merit Awards at the MER Fall Convention last October. Congratulations are in order for George Geesey and Craig Brotman who each won two Merit Awards, and for Horace Oliver and Donald Adams who each garnered one award.

Now is the time to get the models you are going to have judged at the Dixie Division's March Mini-Convention ready. Each year we have an increase in the number of models entered and I hope there are a record number entered this year. You can enter models for both the popular vote contest and for AP Merit Award judging. After the popular vote contest ballots are collected, the AP judges will go to work. When their results are an-

# Obies Trains

On Bren-Mar Drive  
across from General Washington Drive  
Behind the Quality Inn  
at Exit-2 off I-395 in Northern Virginia  
6461 Edsall Rd, Suite #405  
Alexandria, Virginia 22312

Tuesday-Saturday, 11 A.M. - 5 P.M., and by appointment  
*Please call before coming out on Saturdays...*  
*We still go to a lot of shows!*  
Phone (703) 658-9520 • Fax (703) 658-9522

Featuring a wide variety  
of HO and N scale models and supplies.



nounced and if you would like to have the judges explain how and why the points were awarded for your models, I will arrange a room for this purpose.

Last year the Dixie Division was the leader in the Mid-Eastern Region in participation in the Achievement Program. I know that there are many excellent models out there, as well as layouts that can meet the Scenery, Civil, or Electrical requirements (yo, Bill O'Neill!). You people that have contributed your time to the organization at any level from local to national (Doug Gurin, this means you!) are on your way to your Volunteer certificate, too.

Here is another and novel way to earn Volunteer points. The Boy Scouts have a Railroading merit badge. If you have a young Scout in your family, or know of a Scout in the neighborhood, or just wish to help spread the hobby of Model Railroading via the Boy Scouts, you should contact your local troop or Boy Scout Council to volunteer to act as a merit badge counselor. Counselors advise young Scouts and help them complete the requirements for the merit badge.

For more information on the Achievement Program, see the January 1993 NMRA Bulletin where there is a copy of the Achievement Program Rules and Regulations. If you have any questions or need forms, please feel to contact me, Bruce Strickland, any time by phone or mail. My address is listed in the Division Staff roster on page 2.

....

#### **Nominations for Dixie Board Post**

With the imminent retirement of Monroe Stewart from the Dixie Division board of directors, we need nominations for a new board member. The board-member-to-be must be from Maryland or the District of Columbia so that the trans-Potomac balance of the board is maintained. The nominee must also be willing to serve for one full year (possibly more). We will vote on the nominations at the March Mini-Convention in Olney, March 13th, 1993. See page 1 for convention details.

....

#### **The Dixie Database**

We are often asked about the information we request of you on your division membership application/renewal form. We are not trying to pry into your private life, but rather wish to obtain enough information about your modeling efforts to aid other members in finding people with like inter-

ests. We do not pass along information to anyone other than private Dixie Division members on an individual, need-to-know basis. The information is not sold or otherwise distributed to any commercial interests. So the next time you need help with some specific aspect of model railroading, please contact us and we will see who we can find to help.

In order to keep the database current and correct, when you check in at a division event we look you up in the Dixie Division roster. If your name does not appear there, it means that you are not currently a Dixie Division member. If you have been a member in the past, you merely need to pay your dues (still only \$2 a year!). Dues are collected for the calendar year, but we continue to mail you two more issues of the Dixie Flyer after your membership has lapsed.

Note, though, that even if you have never been member of the Dixie Division you may also get the Dixie Flyer. This is because we mail the Flyer to all NMRA members who live within the geographic boundaries of the division. This is our way of letting new NMRA members who are not familiar with us know we are out here and that we sponsor events in the area to which they may wish to come. For new NMRA members reading this, please come and join us at the next Dixie event!

....

#### **Achievement Notes, cont'd**

#### **Call for Nominations**

#### **Dixie Database**

## **Chesapeake Railroad Depot**

*Your Friendly Discount Model Railroad Shop*

**Specializing in:  
Great Prices, Customizing, Repairs, Engines,  
Rolling Stock, Buildings, Tools,  
Detail Parts, Scenery**

*You Can Visit Us At:*  
**200 Chesapeake Ave.  
Prince Frederick, Maryland**

**Monday Through Friday, Noon till 7:00 P.M.  
Thursday till 9:00 P.M.  
Saturday by Appointment  
or**

**Call 1-410-535-1042**

**We will ship UPS!**  
*(UPS runs from my front door to your front door)*



## Dixie Module Team News

## Northern Virginia NTrak News

### HO Module Team News

—Bob Minnis

The Rockville Lions Show in November, 1992, was a success. Ell Geib described the events in the last issue of the Flyer. The HO Module Team was able to assemble 22 modules. Team members participating were Carl Barna, Tim Costello, Bill Cox, Ken Berthoud, Ell Geib, Eric and Ken Heinen, Jim Matthews, Arthur and Bob Ocain, Frank Sikorsky, Bruce Strickland, and myself. Due to illness, Dave Cooper was not able to attend.

The Fairfax Station Open House occurred early in December. According to Kay Gilbert, president of The Friends of Fairfax Station, the event was a huge success. Team members participating were Bill Cox, Tim Costello, Ell Geib, Jim Matthews, Bob Ocain, Frank Sikorsky, Bruce Strickland, and myself. The highlight for the HO Team was a power outage. Let me explain. After the power was off for 20-30 minutes, Clem Clements, a fellow modeler and member of the Fairfax Station committee, mentioned that he had an idea to get some trains running. He moved his antique automobile to the side of the station and opened the hood. He then ran an extension cord from the car into the layout room and passed the female end of the cord under the layout. He then connected the male end of the cord to the auto battery with alligator clips. I took the track lead wires from the transformer and plugged them into the end of the cord. Instant success! A single train operated on the six volt battery power for approximately 30 minutes until regular power was restored.

As in previous years, team members enjoyed the conversation with attendees. Several new members joined the Dixie Division and two of them expressed interest in HO modules. We look forward to seeing their efforts displayed at future events.

Our year ended with the annual set-up at the Capital Children's Museum. Four years ago, this was the first show at which the Module Team displayed its modules. It doesn't seem like it's been that long! Attendance was light the first weekend, but traffic was back to normal during the second. Team members involved were Ken Berthoud, Bill Cox, Tim Costello, Ell Geib, Eric and Ken Heinen, Arthur and Bob Ocain, Frank Sikorsky, Bruce Strickland, and myself.

♦♦♦♦

### Northern Virginia NTRAK

—Matt Schaefer

Northern Virginia NTRAK is looking to get into the shopping mall set-up business so keep your eyes open when scanning the "what's happening this weekend" section of your newspaper.

As of this writing, we expect to set-up some modules at the March Mini-Convention. Considerable scenic work has been done on many of our modules since last March, spurred on by the desire to put on a good show for the Fall MER Convention.

If you are interested in Northern Virginia NTrak or would like to know where our next regular set-up will be, please contact me at the phone number listed in the Staff Roster on page 2.

♦♦♦♦

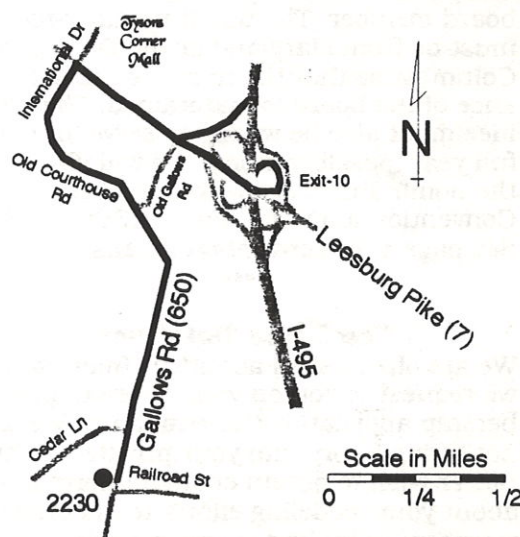
### Are you missing pages 7 & 8?

To respect the privacy of our layout tour hosts, the copies of the Dixie Flyer left on hobby shop counters and other public locations do not contain directions to our hosts' homes. Such directions are normally given on page 7 and 8. If you are missing these pages and need directions, please contact anyone on the Staff Roster on page 2.

### NOTICE!

#### HO Module Team Meeting Sunday, February 28th, 2 P.M. 2230 Gallows Rd., #120

There will be a meeting of all current HO Module Team members and anyone else interested in participating in the HO module concept on Sunday, February 28th, at 2 P.M. We will meet at the Xerox Parts Drop, 2230 Gallows Road, Room 120, Vienna, Virginia (see map). The purpose is to discuss module standards, construction and scenery standards, and determine future projects and activities. The meeting should last about two hours. There is a 7-Eleven next door if you are worried about refreshments. Please plan to attend.





## John Peterson's On2 "Sandy River & Rangeley Lakes" and George Johnson's On3 "Cameron Valley Railroad"

John Peterson • 4207 Downing St. • Annandale, VA • (703) 256-2076  
George Johnson • 6516 Haystack Rd. • Alexandria, VA • (703) 971-4455  
Sunday, May 9th, 1993, 1-5pm

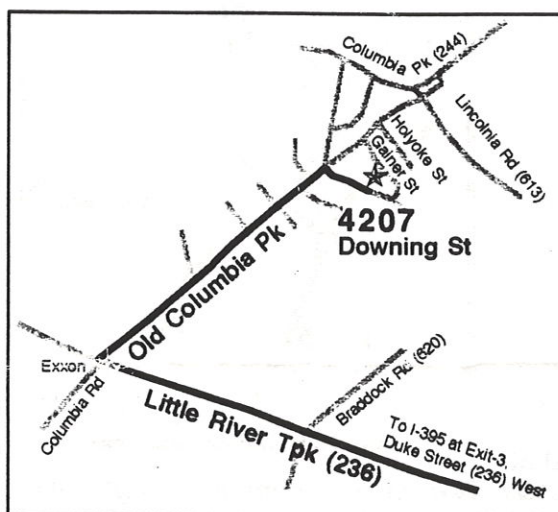
John Peterson and George Johnson, along with others, form a loose alliance of O-scale narrow-gauge enthusiasts. John, as well as Dick Kilday and Alex Austin, displayed his layout during the Fall MER Convention.

John Peterson's "Sandy River & Rangeley Lakes Railroad" is an On2 model of the prototype SR&RL from its standard gauge interchange with the Maine Central Railroad at Farmington, Maine, to Bigelow via the towns of Strong, Kingfield, and Carrabasset. All structures on this layout are scratchbuilt or kit-bashed to match actual structures along the route. Trains are controlled by either Dynatrol or PFM Sound throttles and run over hand-laid track.

George Johnson's "Cameron Valley Railroad" is an 20' by 8' L-shaped, point-to-point layout featuring peddler freight operations. George notes that it is still under construction with most of the scenery and structures in place, but a fair amount of foliage to be added yet. It is also controlled by a Dynatrol command control system. Depending on how things have been going this spring, George hopes to have his live steam, 1-inch scale USRA Light Pacific locomotive on display as well.

**Spring Events, continued**

• **May's Double Home Layout Tour**

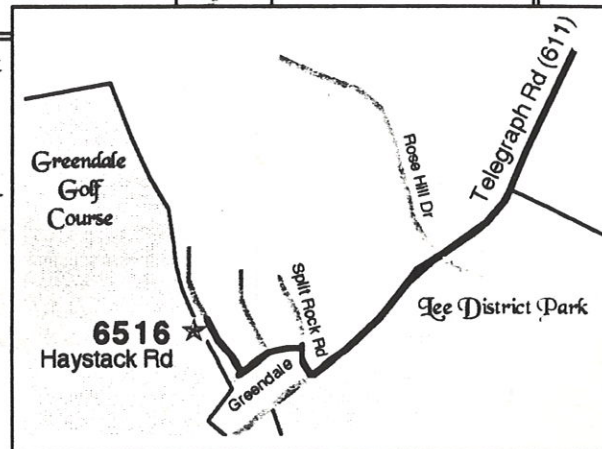
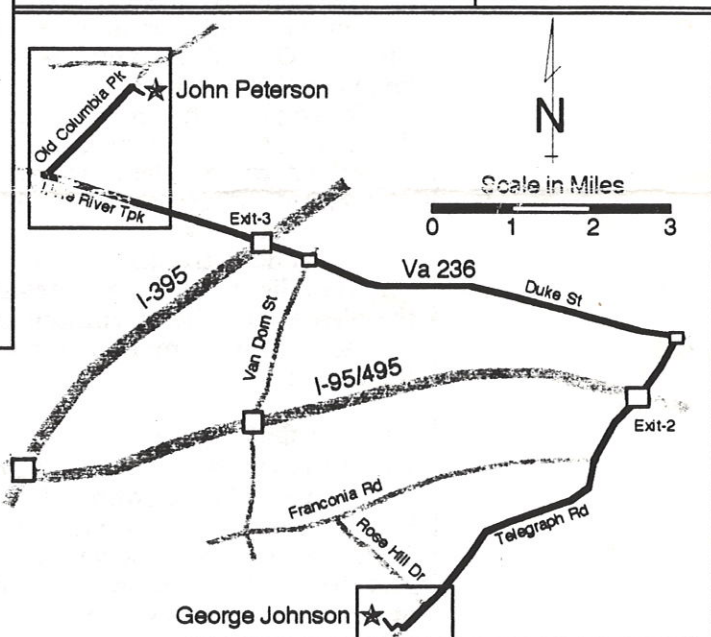


**To get to John Peterson's:** From I-395 in northern Virginia, take exit-3 onto Westbound Duke Street (236). Shortly after getting onto Duke Street it becomes Little River Turn-

pike. Follow 236 west to Old Columbia Pike, just over a mile and a half, and turn right. An Exxon station will be on the opposite corner as you turn. Just under a mile later, Downing Street will be on your right. John's house is 4207, a little ways down on the left.

**To get to George Johnson's:** From I-95 in northern Virginia, take exit-2, Telegraph Road south (611, not 241 which heads towards Alexandria). You will pass through three traffic lights immediately and then reach a fourth about two miles later. This is Rose Hill Drive and Fairfax County's Lee District Park will be on your left. Continue on Telegraph Road one more block and turn right onto Split Rock Road. After passing two houses, turn left onto Greendale Drive. At the end of Greendale, turn right onto Haystack Road. George's house is 6516, the fourth on the left.

**To get from one to another:** As the regional map shows, Route 236 connects Old Columbia Pike with Telegraph Road. Route 236 is called Little River Turnpike in Fairfax County and Duke Street in Alexandria. While somewhat circuitous, this is perhaps the most straight-forward path between John's and George's. There are, of course, more direct routes for more adventurous souls (for instance, 236 to Van Dorn to Franconia to Rose Hill to Telegraph). Whichever way you go, though, you can expect a 30-45 minute trip.





## Sam Powell's S-gauge "Penn Creek Valley Railroad"

20900 Goshen Rd. • Gaithersburg, MD • (301) 840-0267  
Sunday, April 18th, 1993, 1-5pm

### Spring Events

#### • April's Home Layout Tour

Sam Powell's S-gauge "Penn Creek Valley Railroad," it can be safely said, is a world famous layout having been featured numerous times in print and even in a Kalmbach video. The PCV is a freelanced railroad based upon the Pittsburgh & West Virginia and Western Maryland railroads. Set in 1956, it models a coal-hauling, heavy-industry line.

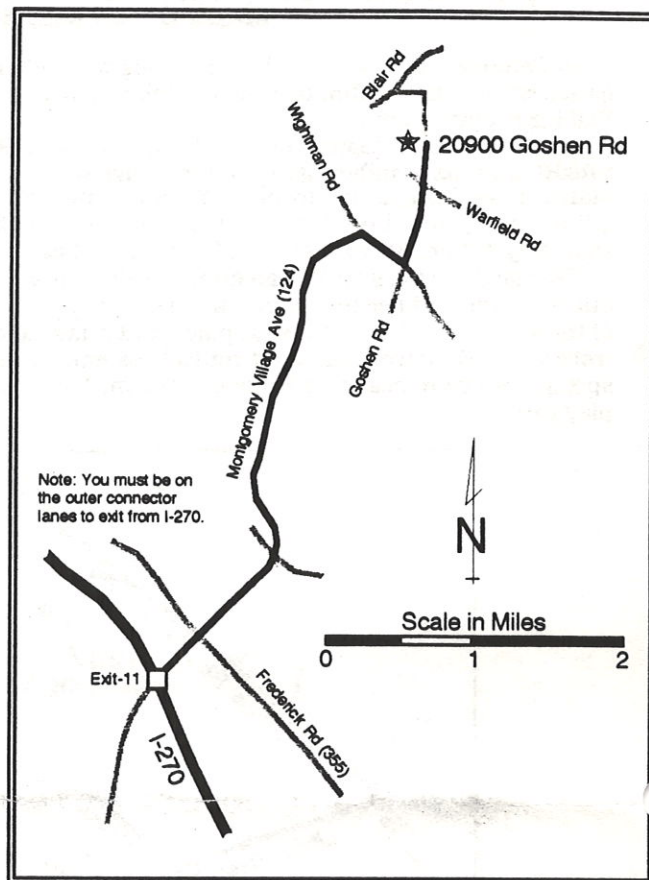
The layout measures 22' by 22', has an along-the-wall plan with a central peninsula, and has a 300' mainline. Sam operates it as a point-to-point railroad using a Dynatrol command control system. Other features include: a hand-painted, detailed cityscape backdrop; a large steel mill; and mountains and hills typical of western Pennsylvania, Maryland, and West Virginia. Overall, Sam claims the layout is "95%" scenicked.

Motive power has a Pennsylvania flavor with both Pennsy and freelanced steam and plenty of early diesels, including F3s, GP7s, RS-3s, an S2, and an SW1. The 1956 period was one of transition from steam to diesel and Sam notes that

the diesels have been winning lately. Two contest-winning Pennsylvania passenger trains, one pulled by E7s and another by a K-4, will be showing off their varnish during the open house.

### How to Get There

To get to Sam Powell's house: From I-270 in Maryland, take exit-11 onto eastbound Montgomery Village Avenue (124). Follow it to the end and turn right onto Wightman Road. Turn at the next left onto Goshen. Just short of a mile ahead on the left will be 20900, Sam's house, a ranch-style house (most in the area are 2-story colonials). Pull into the driveway and park on the lawn to the left of the drive. Hopefully it won't have been too wet before we come.





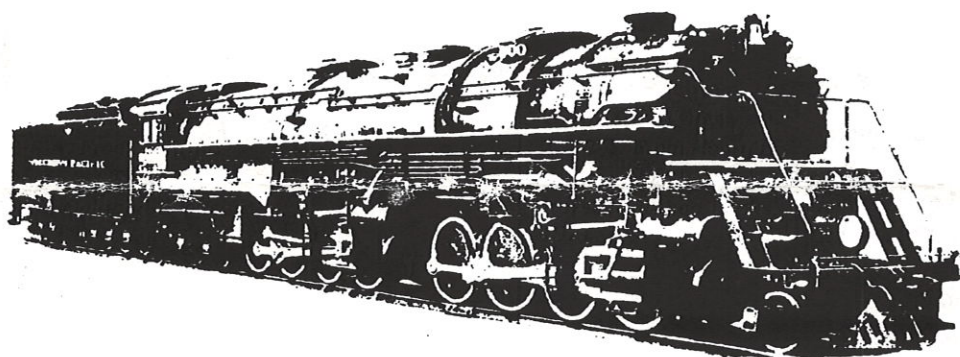
## Public Relations — A Personal Experience

Since the last *Flyer*, I've had the opportunity to be involved in a couple of public relations activities that make you realize how significant the hobby of model railroading is.

The *Washington Post* ran an article on area model-makers featuring rockets, ships; planes, and trains. The train segment highlighted Norm Blackwood's layout (our February, 1991, layout tour). At the end of the article, my name and number were listed as a local contact person for the NMRA. Surprisingly, I only had to entertain some 30 phone calls from people sincerely interested in model railroading. It was a rewarding experience. However, I am still looking for a schematic of a Troller Power Pack in order to complete my task of answering questions. Do any of you have one or know where I can get one? If so, contact me at the number or address listed on page 2.

Lately, I also had the unique experience of giving a clinic and layout tour to a group Boy Scouts. The troop descended on me at 10 a.m. one day and was directed to the rec room for their talk on model railroading. This included an opportunity to touch and feel the various materials on my NTrak module. Afterwards, they were given their final instructions of layout etiquette (don't touch!), along with a list of things to find on the layout (a model railroading scavenger hunt!), and sent off to the layout room. The Scouts returned to the rec room for additional introduction to the Railroading Merit Badge and the NMRA. We all had a good time but for me it was a very rewarding experience. As a matter of fact, I think I'll keep this up—so if you have any scouts or similar groups of young people, let me know!

—Monroe Stewart



## Advertising in the Dixie Flyer — An Invitation

You may have noticed the advertising that has appeared in recent issues, most notably the back-cover ad, but also some interior ads as well. In order to make the Dixie Flyer self-sufficient, the Dixie board of directors has been selling these ads. Producing and mailing the Flyer costs about \$80 an issue for postage, \$25 for mailing labels which we purchase them from NMRA, and about \$25 in other costs, (all in all about \$520 a year). Printing costs are otherwise covered. Thus to make each issue of the Flyer self-sufficient, we only need to sell the back-cover and two full pages of ads. Each full page can be composed of any combination of smaller ads or sold as single block.

We will accept ads for model railroading related goods and services. Ads will run following receipt of payment and ap-

proval by the Dixie board of directors. They should be submitted in camera-ready form if they include artwork, but text-only ads (such as want-ads, for sale notices, etc.) will be retyped to fit into available space. Advertising rates per issue of the Flyer are: Back cover, \$25; Interior Full Page, \$40; Interior Half Page, \$20; Interior Quarter Page, \$10; and Interior Eighth Page (business card size), \$5. The business card size is the minimum ad size. Ads may be taken out by individuals as well as by retailers. Advertising may be ordered by calling the Dixie Flyer editor at the number given on page 2. The above rates hold through next Winter's issue. Please note that the back page is on a first come, first served basis and that we already have a back-log of reservations.

—Pete Matthews

## Business Car Comments from your Division Superintendent



**Northern Pacific  
Yellowstone Class  
2-8-8-4.** From Henry B.  
Comstock's *The Iron  
Horse*, Galahad Books,  
1971

## The Head-End Comments from your Editor



# Dixie Division

Mid-Eastern Region, National Model Railroad Association, Inc.

## Membership Application

The Dixie Division is the National Capital area unit of the Mid-Eastern Region of the NMRA, providing various activities for all model railroaders, such as home layout tours, prototype tours, and an annual Mini-Convention in March. A quarterly newsletter, the Dixie Flyer, is published, with model railroad news and the Division schedule of activities.

You do not have to be a member of the Mid-Eastern Region or of the NMRA to be a Division member, though most Dixie members are also NMRA/MER members. The Dixie Division has one of the largest concentrations of model railroading talent in the country, with no less than ten NMRA Master Model Railroaders in our area, and many more outstanding modelers as well.

The Division's territory is Northern Virginia, from Prince William to Loudoun Counties, including Arlington, Fairfax, Fauquier, and Clarke counties, as well as the independent cities of the region. Also included are the District of Columbia, and Montgomery and Prince Georges counties in Maryland. Anyone interested in furthering the hobby may join the Dixie Division, regardless of their place of residence.

Please indicate status: ☐ **New membership** ☐ **Renewal of current or past membership**

Name: \_\_\_\_\_

Address: \_\_\_\_\_  
\_\_\_\_\_  
\_\_\_\_\_

ZIP \_\_\_\_\_

Telephone Home: (\_\_\_\_) \_\_\_\_\_ Work: (\_\_\_\_) \_\_\_\_\_

(Please provide Area Code because it is now required for all calls across state and district lines)

☐ Enclosed are 1993 Annual Division dues of \$2.00 (includes the quarterly *Dixie Flyer*)

**\$2.00**

Primary Scale/Gauge Interest (circle one):

Z N TT HO OO S O G

Do you have a Layout?(circle one) Yes No

Narrow Gauge (circle one)? Yes No

Module Interest (circle one)? Yes No

Traction Interest (circle one)? Yes No

Secondary Scale/Gauge Interest (circle one):

Z N TT HO OO S O G

Narrow Gauge (circle one)? Yes No

Module Interest (circle one)? Yes No

Traction Interest (circle one)? Yes No

☐ My check includes NMRA Annual dues of \$24.00 (includes the monthly *NMRA Bulletin*)

• Are you an National Model Railroad Association Member (circle one)? Yes or No

If Yes, please give NMRA Member Number: \_\_\_\_\_

☐ My check includes MER Annual Dues of \$6.00 (includes the bimonthly *MER Local*)

• Are you a Mid-Eastern Region Member (circle one)? Yes or No

If Yes, please give MER Member Number: \_\_\_\_\_

• Are you an NMRA Special Interest Group (SIG) or railroad historical society member?

If so, please list your SIG or historical society memberships:

\_\_\_\_\_  
\_\_\_\_\_

**Total Enclosed**

Please return the completed application, with a check payable to **Dixie Division**, to:

**Dixie Division • P.O. Box 3204 • Manassas, VA 22110**

The Division will forward National and Regional dues.





A scene from the Gaithersburg Loco Modelers layout. For information on how you might become involved with this newly forming club, see page 4.



NOW OPEN IN KENSINGTON

MAYBERRY & SONS

# TRAINS & HOBBIES

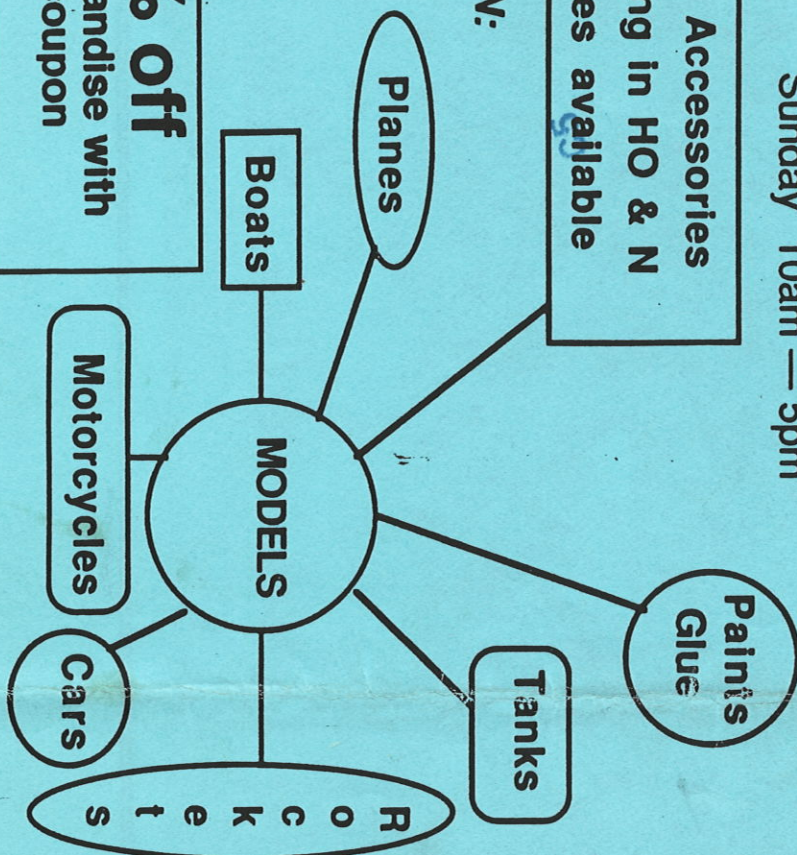
10527 SUMMIT AVENUE  
KENSINGTON, MD 20895  
(301) 564-9360

Monday through Friday 4pm — 9pm  
Saturday 10am — 9pm  
Sunday 10am — 5pm

Trains & Accessories  
Specializing in HO & N  
Other sizes available

COMING SOON:  
Doll House  
Miniatures

**10% off**  
any merchandise with  
this coupon



## The Dixie Flyer

Is the Quarterly Newsletter of  
Division 2 ("Dixie") — Mid-Eastern Region  
National Model Railroad Association, Inc.

**Spring Quarter Issue**  
**March to May, 1993**

P.O. Box 3204  
Manassas, VA 22110

NON-PROFIT  
U.S. POSTAGE  
PAID  
MANASSAS, VA  
PERMIT NO. 234

Important Note!  
If your name is highlighted, you owe us Dues!