

Fall Quarter — September–November, 1991

# The Dixie Flyer



The Quarterly Newsletter Of Division 2 ("Dixie"), Mid-Eastern Region.  
National Model Railroad Association

## A Full Fall Schedule

This Fall promises to be a busy one for the Dixie Division. We start off with two events back to back in September, followed by a home layout tour in October and finally a benefit event in November.

September is marked by two events. First off is Silver Spring Model Railroad Club Open House to be held as part of the Gaithersburg Olde Towne Day, Sunday, September 15th. Come as you are to the Olde Towne Day, enjoy the hospitality of Gaithersburg and visit the booths celebrating its history and culture. While there take a look at a fine layout, the same one displayed at the National Geographic Society two Christmas' ago.

A week later we will be presenting a series of three clinics at historic Fairfax Station, Burke, Virginia, sponsored by the Friends of Fairfax Station, Inc. We will start at 1pm and run until 5pm. Each session will be an hour long with a twenty-minute-or-so long break between each. See page 6 for details.

In October we invited to visit the garden layout of Jim Strong in Upper Marlboro, Maryland. Details about the layout, how to get there, what times we will be hosted are found on page 7, or call one of the Division staff.

Our Module teams will be operating at a Lions' Club Benefit in November. This event will feature our HO Team as well as the premier of our NTRAK Team. In addition we will have various static displays related to model and full-scale railroading as well as our own Loco-Doctor. See page 8 for further details, or call one of the Division staff.

## From N Scale to 12-Inch-to-the-Foot — A Dixie Summer

This summer saw the Dixie Division visit two beautiful layouts and ride the real thing. In June we were invited to visit the layout of Pliny Holt in Potomac, Maryland.

Capt. Holt has just achieved Master Model Railroader status. His Southern Pacific Lines — Oakland Division layout in N scale was a delight: typical southern Californian scenery, a tremendous model of the Oakland Mole, huge bridges, Niles Canyon, Stockton, and Donner Pass. With its progressive cab control and track-side signals, the layout was a joy to operate. Under the able direction of Dave Cooper and Norm Blackwood, this visiting engineer was able to run his own road equipment over the lines with a minimum of hassles.

In July we visited Jack Streeper's Cuyahoga Valley Railroad, a western-flavored, 1930's and 1940's shortline. Beautifully crafted structures and scenery provided an apt setting for scores of hand-built and super-detailed cars and locomotives. Especially enjoyable were a suite of small geared steam locomotives: one each (at least) of Shay, Climax, and Heisler. Nearly complete, the layout is extremely neat and well presented. Good overhead lighting with valances made viewing especially pleasant. For those of you who missed this layout, it was featured in the July, 1991, issue of Model Railroading magazine. See it there.

Our third event this summer involved the real thing, a railfan trip over the Wilmington & Western Railroad in Greenbank, Delaware. The W&W is an active, revenue-earning railroad with both tourist and freight traffic using equipment that the management proudly points out are not restored but still in their active service life. It runs from Marshalton (where it connects with formerly B&O, now CSX, mainline) to Hockessin, crossing one steel and 21 wooden bridges along the 10-or-so mile long route.

## What's Inside

|  |   |
|--|---|
| Fall Events.....                       | 1 |
| Summer Recap.....                      | 1 |
| NMRA Denver.....                       | 2 |
| Fire Academy.....                      | 2 |
| AP Update.....                         | 3 |
| Club Layout Open House.....            | 6 |
| September Fairfax Station Clinics..... | 6 |
| October Layout                         |   |
| Tour Details.....                      | 7 |
| November Lions' Benefit.....           | 8 |

## Departments

|                                       |    |
|---------------------------------------|----|
| Division Staff.....                   | 2  |
| Calendar.....                         | 3  |
| Dixie Module                          |    |
| Team News.....                        | 4  |
| Business Car.....                     | 5  |
| Head End.....                         | 5  |
| Membership                            |    |
| Application.....                      | 9  |
| Buyers, Sellers, and Help Wanted..... | 10 |



## **The NMRA Annual Convention in Denver Draws Dixie Members**

—Monroe Stewart

Once again, the NMRA sponsored an outstanding annual convention. The convention had fantastic clinics, layout tours, and railfan trips. If you have never attended one of these meets, you owe it to yourself. At least 20 of our members represented the Dixie Division at the Denver

convention, maybe many more. There was so much activity that I only saw most members once.

Conventions are becoming more and more family activities with vacations and other side trips planned around them. I found myself spending two evenings at dinner theaters. The crowning touch was a trip to Caboose Hobbies (billed as the World's Largest), and the convention itself featured most of the manufacturers and their products along with quality modular railroads and other displays.

If you don't think you're ready for a National convention, try one of the Regionals. The next Mid-Eastern Region convention is the Funshine Express in Binghamton, New York, on the weekend of October 11-13, to be held jointly with the Northeastern and the Niagara Frontier Regions. If you are up to a National convention, the next two get a lot closer to home: Columbus, Ohio, in 1992, and Valley Forge, Pennsylvania, in 1993. Remember, the hobby and the fun doesn't stop with just the Dixie Division.

## **NMRA Denver Fire Academy**

### **The Dixie Flyer**

*Is the Quarterly Newsletter of Division 2 ("Dixie")  
of the Mid-Eastern Region  
of the National Model Railroad Association, Inc.*

Editor: Peter K. Matthews

The Dixie Division territory includes: the District of Columbia; Montgomery and Prince Georges Counties, Maryland; Prince William, Arlington, Fairfax, Loudoun, Frederick, and Clarke Counties, Virginia, as well as the independent cities of Alexandria, Leesburg, and Winchester.

### **... Divison Staff ...**

|                             |   |
|-----------------------------|---|
| <b>Superintendent</b>       | Monroe Stewart<br>4908 Woodland Blvd.<br>Oxon Hill, MD 20745<br>(301) 630-7565 (home)                           |
| <b>Asst. Superintendent</b> | Jeff Martello<br>P.O. Box 1206<br>Bethesda, MD 20827<br>(301) 365-0925 (home)<br>(301) 530-3176 (work)          |
| <b>Director at Large</b>    | Robert A. Ocain<br>4414 Cannes Lane<br>Olney, MD 20832<br>(301) 774-5386 (home)                                 |
| <b>Paymaster</b>            | Robert G. Minnis<br>3016 Dower House Dr.<br>Herndon, VA 22071<br>(703) 391-0675 (home)<br>(703) 264-2535 (work) |
| <b>Clerk</b>                | Bruce Strickland<br>10766 Tullamore Ct.<br>Manassas, VA 22111<br>(703) 361-5620 (home)<br>(703) 569-6800 (work) |
| <b>NTrak Coordinator</b>    | Tom Reid<br>1105 Criton St.<br>Herndon, VA 22070<br>(703) 742-8720 (home)                                       |
| <b>Editor, Dixie Flyer</b>  | Pete Matthews<br>4416 Longworthe Sq.<br>Alexandria, VA 22309<br>(703) 360-2313 (home)                           |

### **Fire Academy Needs Talent**

Clinton Smoke, who is the Fire Science Program Head at Northern Virginia Community College, and an HO enthusiast, attended our July meeting at Jack Streeper's. Clint is trying to recruit some NMRA talent to help with the building of two HO scale training modules at the Fairfax County Fire and Rescue Academy on West Ox Road, just south of Fair Oaks Mall.

The modules are appropriately located in a former N&W caboose, part of an eight

### **It's Time to Pay Your 1992 Dixie Dues**

Even though you may have received this *Dixie Flyer* in the mail, you may not be in good standing with your Division dues. The *Dixie Flyer* is mailed to all NMRA members in the National Capital area as an information service, especially to those new NMRA members, and as a service to the hobby in general. Paying your dues now will pay you up through December 1992. See the page 9 to find out how to join the Dixie Division, or to catch up on your dues.



**Calendar**  
**Fire Academy,**  
**cont'd.**

**Achievement**  
**Program**

car full-scale train at the Academy used to train firefighters and rescue personnel on railroad equipment and procedures. The HO scale modules will provide a table-top training environment to develop problem solving skills for command personnel. Each of the two modules is 3 by 20 feet. The first will provide a transportation mix, including Metro, normal rail, and highway modes. The second module will represent an industrial park and tank farm similar to the complex along I-95 south of the Beltway.

While the normal training mode will put the scene in a "freeze frame" and invite students to solve the kinds of problems typically faced by the incident commanders in emergency incidents, Clint noted with a smile that the two modular units can be connected, allowing continuous train operation between the units. He intends that the entire operation provide all the features of a decent model railroad. As he put it, "There has to be some fun in this somewhere."

Talent is needed for track work and scenery. If you are interested in volunteering a little of your time and talent to this worthwhile project, please call Clint at school, (703) 323-3252, or at home, (703) 425-5077.

**Achievement Program Update**

—Bruce Strickland

The Dixie Division is very active in the NMRA Achievement Program. The Division is leading the Mid-Eastern Region in the number of Golden Spike Awards, Merit Awards, and Achievement

Program Certificates earned by its members. Our Division and one other currently produce most of the activity within the Region. At this point, I could probably take all or most of the credit for this outstanding performance, but I will not because all you people who have earned these Awards have done it. I am merely the conduit for all your efforts.

The following two people have earned AP Certificates this past quarter: Harvey Horowitz has earned Master Builder—Scenery; Dave Cooper has earned two, Model Railroad Engineer—Electrical and Model Railroad Engineer—Civil. Dave has also qualified for a Golden Spike Award. I wish to thank Monroe Stewart, Paul Locher, Graham Harvey, and Paul Dolkos for doing the judging for these certificates.

If you want further information on the Achievement Program, need forms, or just have questions, please feel free to see me at most Dixie functions, call, or write to me. My phone numbers and address are given in the Division Staff listing on page 2 of this issue.

The Dixie Division kindly requests a nominal donation at the door of events it sponsors or presents. Your \$2 annual dues cover the costs of distributing the *Dixie Flyer* and little else. A donation is normally \$1 and goes towards incidental costs associated with planning and carrying out our monthly events.

**... Dixie Division Calendar ...**

\*—Details elsewhere in this *Dixie Flyer*. ‡—Details in an upcoming *Dixie Flyer*.

| Date            | Event                                     | Time   | Location                           |
|-----------------|---|--------|------------------------------------|
| Sept 14         | NVMR Club Open House                      | 1-5p   | Vienna, VA                         |
| Sept 15         | Silver Spring Club Open House             | 10a-5p | Gaithersburg, MD*                  |
| Sept 22         | <b>Dixie Model Railroad Clinics</b>       | 1-5p   | Fairfax Station, Burke, VA*        |
| Oct 11-13       | MER Funshine Express Convention           |        | Binghamton, NY                     |
| Oct 12          | NVMR Club Open House                      | 1-5p   | Vienna, VA                         |
| Oct 6           | <b>Dixie Layout Tour</b>                  | 1-5p   | Upper Marlboro, MD*                |
| Nov 16          | NVMR Club Open House                      | 1-5p   | Vienna, VA                         |
| Nov 23          | <b>Dixie Module Team</b> operates modules |        | Rockville Lions' Club, MD*         |
| Dec 7-8         | <b>Dixie Module Team</b> operates modules |        | Fairfax Station, Burke, VA‡        |
| Dec 14          | NVMR Club Open House                      | 1-5p   | Vienna, VA                         |
| Dec 15          | <b>Dixie Home Layout Tour</b>             | 1-5p   | Alexandria, VA‡                    |
| Dec 21-22/28-29 | <b>Dixie Module Team</b> operates modules |        | Natl. Capital Children's Mus., DC‡ |
| Apr 30-May 2    | MER Spring '92 Convention                 |        | Hampton, VA                        |



## Dixie Module Team Update

—Bob Minnis

Great News! The module team effort has grown since the last issue of the *Dixie Flyer*. The N scalers have gotten together to form their own module group under the direction of Tom Reid. See Tom's article below.

A word or two of encouragement for you Dixie members who are working on or thinking about building an HO module or modules. This "Hazy, Hot, and Humid" weather is the perfect excuse to retire to the air conditioned basement or vacant room and work on your module. Add a building to a vacant space, or improve some scenery detail. Looking through past issues of model railroad publications is an excellent source for ideas.

The next scheduled event for the module team is the Rockville Lions' Club event on November 23rd. The event will be held at the Rockville Seniors' Center between 10am and 4pm. Additional details and map follow elsewhere in this issue. There is still plenty of time to build or improve your module. Please don't hesitate to give me a call if you have any questions or problems (see the masthead on page 2 for my phone number).

## And on Track N...

—Tom Reid

What began as a Flyer put out by an individual in a hobby shop in Herndon in April is now a growing NTRAK N scale module club. The group has met five times so far and on June 16th five new modules were erected and trains were running in under one hour (this may be an all time record!).

The original concept was a group for just the Reston/Herndon/Sterling area. However, the five initial members have grown to fourteen representing all of Northern Virginia. The organization so far is informal and the original emphasis was on the five initial members completing modules before trying to grow. Four more modules are in progress, however. The first official show will be at the Rockville Lions' Club with the Dixie Division's HO Module Team in November.

The club has met on the first and third Sunday nights so far in the Reston/Herndon area. Tentative plans are to have Thursday night meetings also and to alternate between operating sessions and

construction/clinic meetings to work on common (corner) modules. We want to help the beginning model railroader learn the basic carpentry, electrical, track, and scenery techniques.

We invite all new and experienced N scalers to join us. For more information, please call Dennis Austin at (703) 444-7198, Graham Harvey at (703) 742-3368, Tom Reid at (703) 742-8720, or Chris Riddick at (703) 437-9247. All numbers are home phone numbers. There is no requirement to build a module, only to have fun and help model railroading.

## Future Module Team Events

|                      |                                       |
|----------------------|---------------------------------------|
| Nov 23rd             | Rockville Lions' Club<br>(HO & N)     |
| Dec 7/8              | Fairfax Station Show                  |
| Dec 21/22<br>& 28/29 | National Capital<br>Children's Museum |

## HOBBIES

"A man with a hobby is universally shunned. He cares nothing save the one idea which engrosses all his time. He will not engage in conversation on any topic save one, and will adroitly lead all the company up to his train of thought. He never receives credit for intelligence which he really possesses, for he wearies his listeners and will brook no contradiction. Beware of a hobby. The possession of one will impair your usefulness."

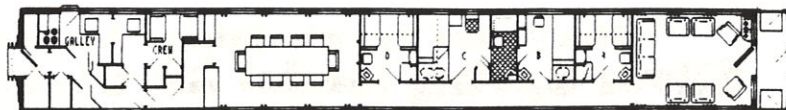
— *Twentieth Century Etiquette*  
by Annie Randall White, 1900.

**Dixie Module  
Team News**

**NTRAK Team**

**Module Team  
Calendar**





Pullman's Ferdinand Magellan

## The Business Car ...Comments from your Division Superintendent

## Dixie Division Seeks Home Layout Tour Volunteers

We need volunteers for Home Layout Tours. Many modelers feel somewhat intimidated when asked to show off their layout to the critical eyes of a group of fellow model railroaders, people they are sure know more about model railroading than themselves and have built layouts with beautiful scenery, advanced electronics, and flawless operation. Let me take a moment to dispel this concept. The purpose of a Home Layout Tour is not just to show off your layout, but is also an opportunity for the Dixie Division to meet on a monthly basis, to exchange ideas, to discuss techniques, and to have an afternoon of fellowship with other railroad enthusiasts. As a bonus, you might find someone who knows just how to fix a pesky switch machine or has some useful advice about the scenery in the region you're modeling. You've put a lot of effort into your layout, don't be afraid to show it off.

— Monroe Stewart

## Thanks and a Suggestion

Welcome to the *Dixie Flyer*. Before I start I want to emphatically second Monroe's comments above. Even a layout with no scenery can generate discussion about track laying, track planning, and operations. In fact, that is precisely the moment when you really should get advice from as many experienced people as possible, before you cover it up with labor-intensive scenery. As a plus, hosting a home layout tour earns you one credit towards the NMRA's Association Volunteer certificate. Look for the announcement of my December 15th home layout tour in next quarter's *Dixie Flyer*, due out in early December.

This quarter marks my second as your editor and I want to extend warmest thanks to everyone who has complimented the appearance of my first attempt at the *Dixie Flyer* this past three months. I'll gladly take the credit ("If you don't blow your own horn, someone will use it for a flower pot," a friend of mine recently told me), but needless to say, the content comes from others, mostly Bill Cox last issue, and many others whose names are found throughout both issues. While this would still be a pretty publication without their contributions, it would be an awfully empty one. Many thanks to

them because form without content is just wasted paper.

On another subject, an idea has come to mind of late. A journal I receive has a neat feature called the Museum Corner. In it, members send in the names, locations, and content of various natural history museums around the world. Then, when readers find themselves in those cities, they can visit the museums. While recently in Dallas, I thought that such a feature for model railroading would be grand. An analogous, member-authored column could be printed here and this is a formal call for submissions. Any of you who know of museums that have railroad themes, or good railroad exhibits, including model railroad layouts, are invited to send me a couple paragraphs on them. Please include at least the name of the museum and city as well as a brief description. I will run them as space permits under the provisional title of "Model Railroading on the Fly."

We could even extend this to include your favorite hobby shops in other cities, but to be fair to our local hobby shops, I would please ask you to limit your submissions to shops outside the bounds of the Dixie Division. Again, this would be for those of us visiting cities not near here. Think of the description as a review and not as an unpaid endorsement, that way it will be a service to your fellow modelers and not a free advertisement for the shops. To be honest a good review is also an endorsement — just remember the theme of *service* to your fellow modelers. Let me now what you think.

On the technical side, many of you have asked about what system I used to produce this newsletter. For the curious, it's a Macintosh IIsi using Ashton-Tate's FullWrite Professional for copy transcription, writing, and editing, Silicon Beach's SuperPaint for graphics, and Letraset's Ready,Set,Go! for page layout and final editing. The camera-ready newsletter is printed on a GCC Personal LaserPrinter. It takes about a day or so once everything is in hand to enter and layout the newsletter. Many of the graphic elements I have drawn over the past five years of Mac ownership or have scanned in from other sources (the title elements for instance). Bruce Strickland handles xeroxing, collating, and mailing.

— Pete Matthews



## The Head-End ...Comments from your Editor



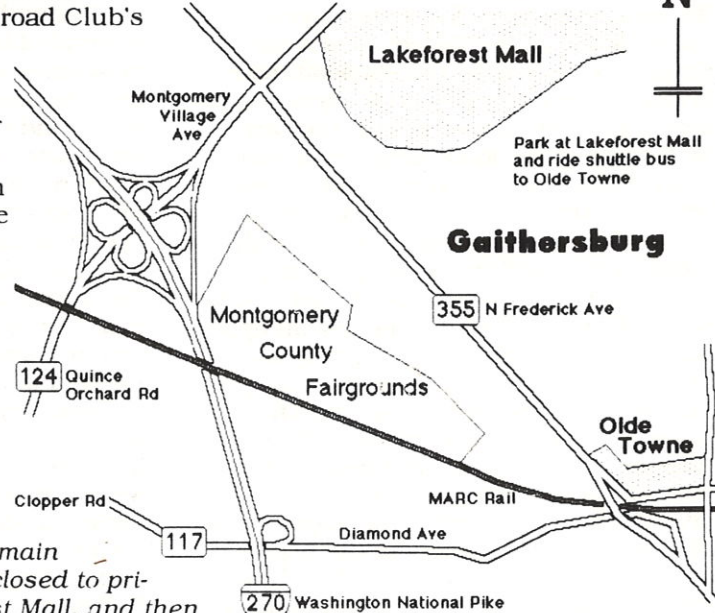
# Dixie Division September Events — A Double Bill

## Silver Spring Model RR Club; Clinics

Sept 15th, 11am-5pm, Gaithersburg, MD; and Sept 22nd, Burke VA, 1-5pm

### Silver Spring Model Railroad Club

The Silver Spring Model Railroad Club's layout in Gaithersburg, Maryland, will be open to the public on Sunday, September 15th. The open house is part of the activities surrounding the 10th annual Olde Towne Day in Gaithersburg. The layout will be open from 11am-5pm, rain or shine. It is located in the old B&O Freight House in Olde Towne Gaithersburg. Although this is not an official Dixie event, we thought you would like to know of a chance to see this fine layout. It is the layout displayed at the National Geographic Society two Christmas' ago. Please note: *Because of the celebration, the main streets of Gaithersburg will be closed to private vehicles. Park at Lakeforest Mall, and then catch the shuttle bus into Olde Towne.* Olde Towne Day is a day-long celebration which includes entertainment, food, arts and crafts, and general merriment. For more information about Olde Towne Day, you may call (301) 258-6350.



Scale is about 0.35 mile per inch

### September's Events:

**Silver Spring Club Layout Open House**

**Model Railroad Clinics at Fairfax Station**

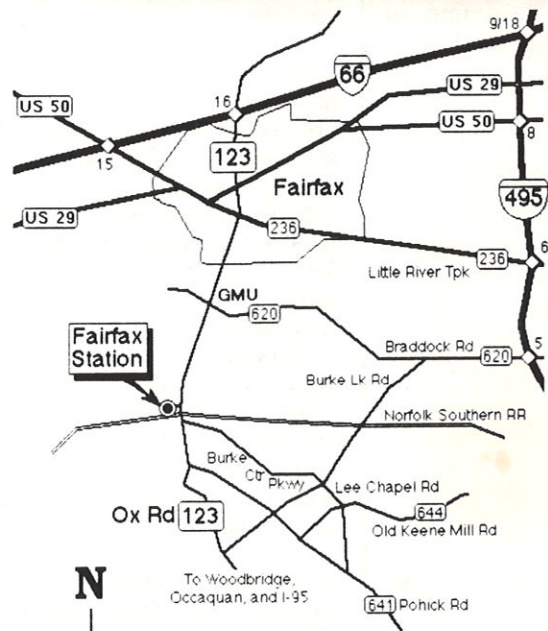
Note: Pages 7 and 8 are not included in general distribution copies of the *Dixie Flyer*. If you are missing these pages, call a division staff member for details on our October and November events.

### Model Railroad Clinics Fairfax Station in Burke, Virginia

The Dixie Division will host a series of clinics sponsored by the Friends of Fairfax Station, Inc., on Sunday, September 22nd. Fairfax Station is located in Burke, Virginia, on Route 123 (Ox Road) just north of its intersection of Burke Center Parkway, along the tracks of the Southern (now Norfolk-Southern) Railway. Three one-hour clinics will be offered sequentially starting at 1pm with twenty minute breaks between each. The schedule is:

|        |                  |
|--------|------------------|
| 1pm    | Clinic 1         |
| 2:20pm | Clinic 2         |
| 3:40pm | Clinic 3         |
| 5pm    | Done for the day |

As this *Dixie Flyer* goes to press the presenters and the subjects of the clinics have yet to be selected. But don't let that dissuade you from coming. We expect to have some great clinics lined up, with something useful and of interest to everyone.



Scale is about 3 miles per inch



**Dixie Division October Home Layout Tour**  
**Jim Strong's G-scale Woodland Railway**

**6617 Pepin Dr., Upper Marlboro, MD, 1-5 pm, Sunday, October 6, 1991**

**October's Event:**

**Jim Strong's  
Woodland  
Railway**

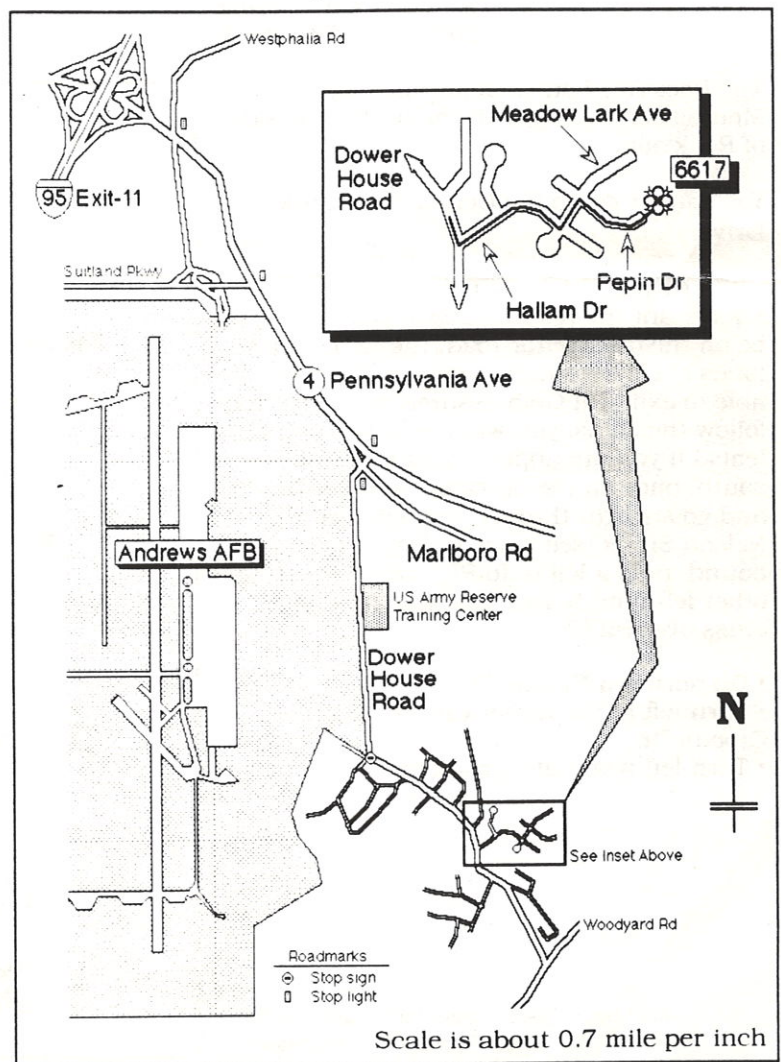
Our October home layout tour will be hosted by Jim Strong. His G(for garden)-scale layout, the Woodland Railway, boasts an operational theme with classification yards, passing sidings, and reversing loops, and totals over 800 feet of track. The railway wends its way from Jim's backyard out into the woods. A steep grade in one part even requires a helper district. Jim and his family operate both passenger and freight trains which serve four towns, the names of which reflect the arboreal nature of the route: Tall Oaks, Hemlock Hills, Woodland Junction (where the track heads into the woods), and Willow Flats. The Woodland Railway operates an LGB 2-4-0, an LGB 2-6-0 Mogul, a 40-ton center-cab yard switcher, and an early diesel switcher which can be used either in yard service or as a road switcher in wayfreight operation. All locomotives are self-powered and radio controlled.

Come on by and see this great layout, and hope the leaves don't fall too early. Jim promises to be there, rain or shine.

To reach the Strong's place:

- Take Exit-11 off the Capital Beltway (I-95) and head south along Pennsylvania Avenue.
- Go past Westphalia Road and Suitland Parkway, then move to the right.
- Follow Marlboro Road as bears right off Pennsylvania just before the intersection with Dower House Road.
- Turn right onto Dower House Road.
- Follow Dower House Road south to the four-way stop and take a left.
- Take a left at Hallam Drive, about 0.6 mile from the stop sign.
- Take the second left onto Meadow Lark Avenue, and then a right onto Pepin Drive.
- Park and walk to the house, 6617, located at the end of the cul-de-sac.

Should you have any trouble getting there, call Jim at (301) 599-6337.



**Dixie Module Team Event**  
**Rockville Lions' Club Benefit**

**Rockville Senior Center, Rockville, Maryland, Saturday, Nov 23rd, 10am-4pm**

The Rockville Lions' Club has scheduled a benefit show at the Rockville Senior Center on Saturday, November 23rd. The Lions have invited the Dixie Division Module Teams to set up a model railroad demonstration in celebration of National Model Railroad Month. This will be the premier event for the NTRAK Team. Other demonstrations are planned as well. Doors will open at 10am and close at 4pm. The following Dixie activities are being planned:

Operating Railroads in Z, N, and HO scales  
Static Displays in G, O, HO, N, and Z scales  
Railroad Films  
Slide/Tape Clinics  
Loco-Doctor: help for your sick locomotives  
...And more railroad related displays.

Additional information or questions concerning this event can be directed to either:

Ellsworth (Ell) Geib  
Rockville Lions Club

(301) 948-8316 (home)  
(301) 227-1829 (work)

Bob Minnis

Dixie Division Module Coordinator

(703) 391-0675 (home)  
(703) 264-2535 (work)

**November's  
Events:**

**Lions' Benefit  
Module Team  
Show**

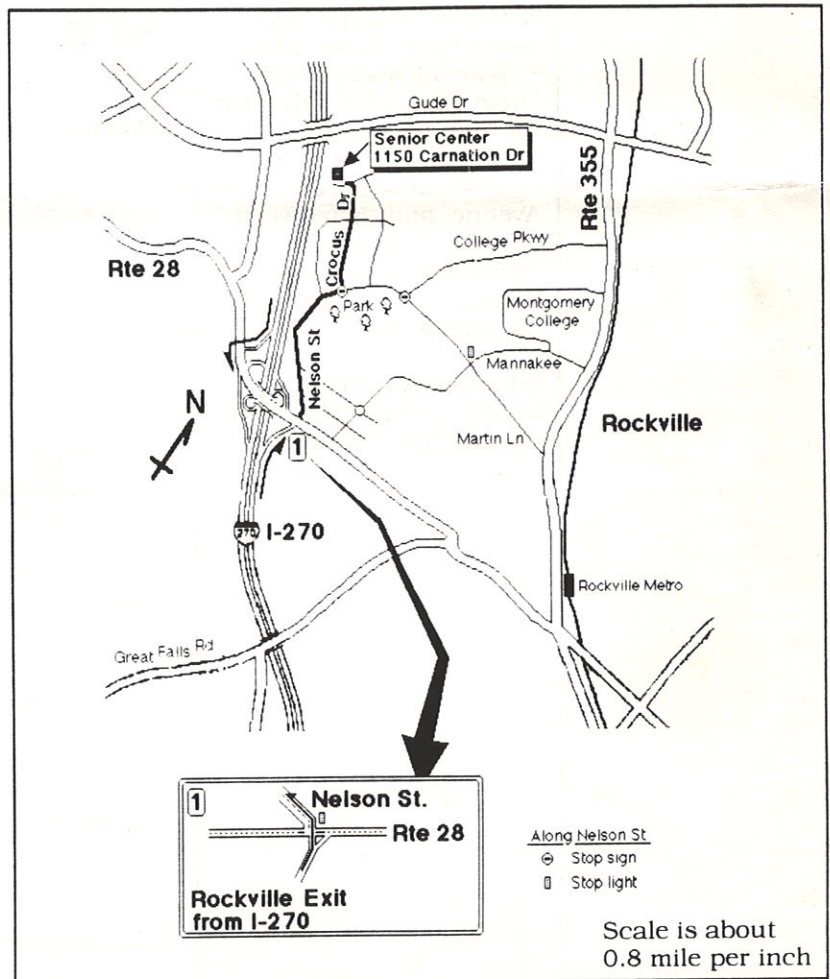
The Rockville Senior Center is near Montgomery College, on the northwest side of Rockville.

You *cannot* get to the Center from Gude Drive.

I-270 travelers take note:

- You want the Rockville Exit, but you *must* be on the distributor road, the right-hand lanes of I-270, otherwise you will not be able to exit. (Ell Geib assures me that if you follow the signs, you will not have any problems.) If you are approaching from the south, once on the off-ramp, stay to the left and go straight through the light onto Nelson Street (see inset 1). If you are south-bound, take a left onto Rte. 28 and then another left onto Nelson St., just after you cross over I-270.

- Go north on Nelson St.
- Turn left at the three-way stop onto Crocus Dr.
- Turn left again at Carnation.



Map by Ell Geib. Edited for inclusion in the  
*Dixie Flyer* by Pete Matthews.



## Buyers, Sellers, and Help Wanted

**Wanted:** PFM CNJ 4-6-4T (HO), any condition, whole or parts, especially separate rear pilot and "cow catcher"; also Models West/Huntington version. I am restoring a couple.

**Wanted:** Hallmark RDC's (HO), any condition, whole or parts.

**For Sale:** Fine Scale Miniatures Kits. Chippy Hollow Hardware Co., kit #260. Swakhammers Welding Co., kit #265.

**Prototype photos** always welcome

Please call or write:

Hal Davidson  
5732 Biscayne Drive  
Alexandria, VA 22303  
(703) 557-0884 work  
(703) 960-5516 home

## Dixie Division Directories

Bruce Strickland says that if any of you are interested in having an alphabetically sorted, membership directory for the Dixie Division, just send him \$1<sup>00</sup> to cover postage and handling. Bruce may be reached at 10766 Tullamore Ct., Manassas, VA 22111.

## Clinicians and Home Layout Tour Hosts Needed

Bob Ocain, Dixie Board member and coordinator for the Mid-Eastern Region Annual Fall Convention, to be hosted by the Dixie Division in the Fall of 1992, is looking for several people to run clinics and host home layout tours. You can earn NMRA Achievement Program credits for these activities. So, please give him a call if you are interested. Bob can be reached by mail at 4414 Cannes Lane, Olney, MD 20832, or by phone at (301) 774-5386 anytime.

# The Dixie Flyer

Is the Quarterly Newsletter of  
Division 2 ("Dixie") — Mid-Eastern Region  
National Model Railroad Association, Inc.

**Fall Quarter Issue**  
**September - November, 1991**

P.O. Box 3204  
Manassas, VA 22110

NON-PROFIT  
U.S. POSTAGE  
PAID  
MANASSAS, VA  
PERMIT NO. 234

**Have You Paid Your 1992 Dixie Dues?**



## About the Dixie Division

The Dixie Division is the National Capital area unit of the Mid-Eastern Region of the NMRA, providing various activities for all model railroaders, such as layout visits, prototype tours, and an annual mini-convention in March. A quarterly newsletter, the *Dixie Flyer*, is published, with model railroad news and the Division schedule of activities.

You do not have to be a member of the Mid-Eastern Region or of the NMRA to be a Division member, though most Dixie members are also NMRA/MER members. The Dixie Division has one of the largest concentrations of model railroading talent in the country, with a "Magnificent Seven" of Master Model Railroaders in our area, and many more outstanding modelers as well.

The Division's territory is Northern Virginia, from Prince William to Loudoun Counties, including Arlington, Fairfax, Fauquier counties, as well as the independent cities of the region. Also included at this time is the District of Columbia, and Montgomery and Prince Georges counties in Maryland. Anyone interested in furthering the hobby may join the Dixie Division, regardless of their place of residence.

## Dixie Division

National Model Railroad Association, Mid-Eastern Region

### Membership Application

☐ New membership

☐ Renewal of current or past membership

Name: \_\_\_\_\_

Address: \_\_\_\_\_

ZIP \_\_\_\_\_

Telephone Home: (\_\_\_\_) \_\_\_\_\_ Work: (\_\_\_\_) \_\_\_\_\_  
(Please include Area Code because it is now required for all calls across state or district lines)

☐ Enclosed are 1991 Annual Division dues of \$2.00 (includes the quarterly *Dixie Flyer*) **\$2.00**  
Scale/Gauge Preference (circle one): Z N TT HO OO S O G Other: \_\_\_\_\_  
Narrow Gauge (circle one)? Yes or No Module Interest (circle one)? Yes or No  
Traction Interest (circle one)? Yes or No

• Are you an National Model Railroad Association member? Yes or No (circle one)  
If Yes, please give your NMRA Member Number: \_\_\_\_\_

☐ My check includes NMRA Annual dues of \$24.00 (includes the bimonthly *NMRA Bulletin*) \_\_\_\_\_

• Are you a Mid-Eastern Region member? Yes or No (circle one)  
If Yes, please give your MER Member Number: \_\_\_\_\_

☐ My check includes MER Annual Dues of \$6.00 (includes the bimonthly *Local*) \_\_\_\_\_

• Are you a SIG (Special Interest Group) or railroad historical society member?  
If so, please list your SIG or historical society memberships:

\_\_\_\_\_  
\_\_\_\_\_

**Total Enclosed** \_\_\_\_\_

Please return the completed application, with a check payable to **Dixie Division**, to:

P.O. Box 3204

Manassas, VA 22110

The Division will forward National and Regional dues.