

Constructing Pine Trees

Presented by Michael Hart
Hart of the South Models

Email: hartotsouth@yahoo.com

Website: hartofthesouth.com

703-379-2006



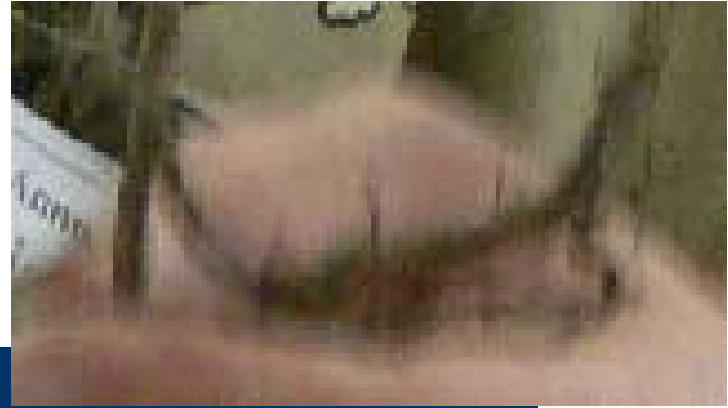
Materials/Tools

- One 3/16" to 1/4" thick stick or wood dowel up to 10" in length
- Tree roots pulled from ground (Azalea bush clippings for slash pines - armature with smaller branch radiating out)
- Supertrees (tree branches from Scenic Express for Slash Pines)
- White Latex caulk
- White air-dry clay
- Disposable brushes (acid brushes)
- Dark green static grass
- India ink
- Green, yellow, and brown spray paint
- White/ivory acrylic paint
- Dull clear spray
- Glue (wood glue or superglue)

Prepare trunk

- Measure 4" to 5" from top of stick/dowel and drill 5/64" hole halfway through at slight downward angle
- Repeat by moving up ½" to 1" and alternating sides until top is reached

Prepare armatures branches



- Select tree roots/azalea clippings
 - Thicker armatures at bottom; smaller and thinner ones at top
 - Trim bottom, larger armatures to 2" – 4"; trim appendages to create branch forks on each armature
 - For larger armatures, clip armatures at 45 degree angle. Drill 1/16" hole 1/4" deep in bottom of armature to accept connective toothpick
 - Insert and glue toothpick; trim to leave 1/8" of toothpick remaining
 - For smaller armatures, toothpick not necessary: file end of armature to a point
 - Continue to top, creating shorter and shorter armatures for a tapered effect
 - Drill small holes halfway through armature, at a downward angle, where smaller branches would naturally occur

Attaching Branches and Armatures (1/2)



- Branches: Glue Supertree clusters into holes in armature: larger clusters for bottom branches and smaller ones for top branches



- Starting at bottom of trunk holes, insert and glue larger armatures – continue to top using smaller ones.

Attaching Branches and Armatures (2/2)

- To crown the tree, attach Supertree material directly to top of trunk to create a dome effect



Refining/defining trunk texture (1/2)

- Add water to air-hardening white clay to create thick slurry



Refining/defining trunk texture (2/2)



- Coat trunk and armatures using a disposable brush and with lengthwise strokes (creates bark effect)
- Allow clay to set but not completely harden

Refining/defining trunk texture

- Add water to thin out white latex caulk to make it easier to work with and lengthen drying time



- Apply caulk to armatures to create seamless connections – armatures should appear to be growing from trunk and Supertree branches should appear to be growing from the armatures
- Moisture in caulk will reactivate and mix with clay, giving a rough surface to better absorb paint and stain



Paint trunk

- Clay/caulk mixture sets fairly quickly – can paint tree ½ hour later
- Paint trunk brown followed by light wash of India ink, allow to dry



Apply and Paint Needles (1/2)



- Use clear coat as an adhesive and spray it on tips of Supertree branches - only do one or two branches at a time to limit overspray



- Add static grass to coated parts. Repeat until desired needle density is achieved.
- Turn tree upside down and tap off excess needles – this will also cause needles to stand up a bit



Apply and Paint Needles (2/2)



- Using a small brush, clean off stray grass from armatures and trunk – do this before it dries
- Alternating green and yellow paints, lightly dust canopy for desired effect.

Apply and Paint Needles

- Dry brush trunk and armatures with white or ivory paint to bring out bark texture

Congratulations! You have constructed a snappy-looking pine tree!

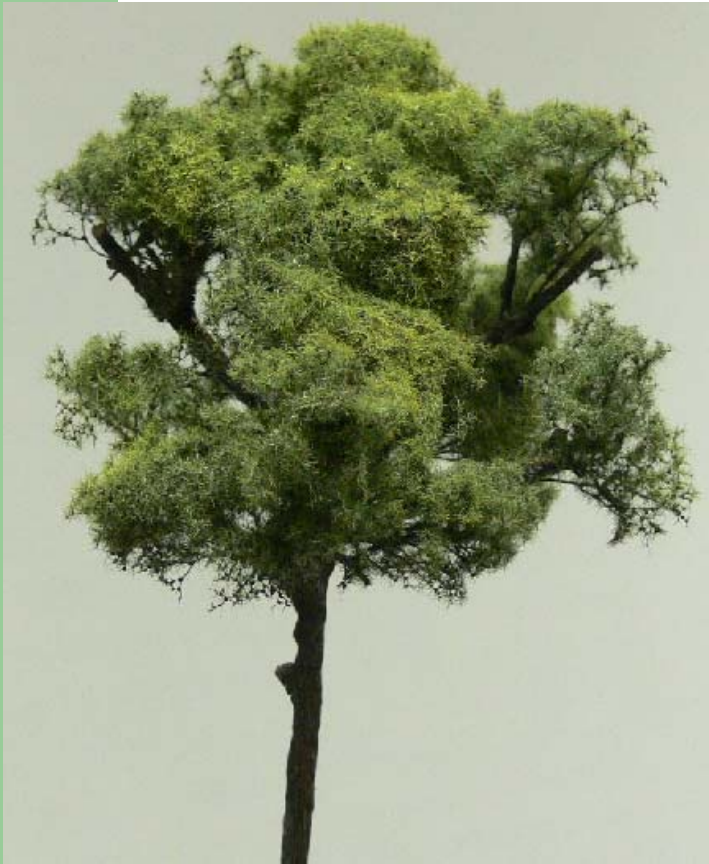
Finished Trees



Finished Trees



Finished Trees



Finished Trees

